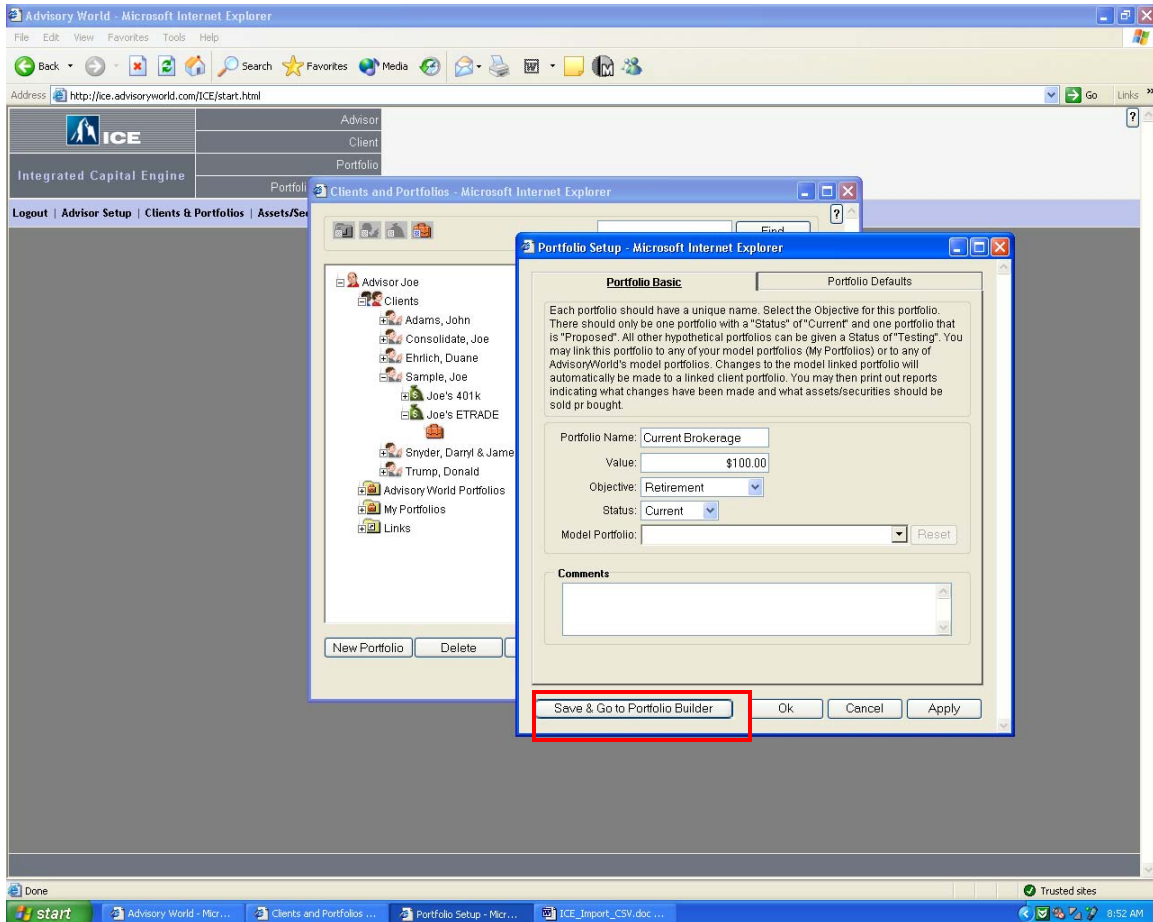


Importing Portfolios into ICE via CSV



Build a new portfolio in ICE. If you plan on splitting the portfolio by % then enter a value. If you plan on using number of shares or summing values of the assets then simply leave at \$100. Press Save & Go to Portfolio Builder.

Advisory World | Portfolio Builder - Microsoft Internet Explorer

File Edit View Favorites Tools Help

Address http://ice.advisoryworld.com/ICE/portfolio/portbuilder.html

ICE
 Advisor: [Joe Advisor](#) | [Log Out](#)
 Client: [Joe Sample](#) | [Select Portfolio](#)
 Portfolio: [Account #987](#) | [Current Brokerage](#)
 Portfolio Comparison: [Select](#)

Home | Clients & Portfolios | Add/Edit Assets | Cash Flow & Plan Analysis | Optimize Portfolio | Reports | Help

Portfolio Value: \$100
 History/Estimates
 Probability Range: 30% 35% 39%
 Years Hold
 Apply
 Portfolio Status

Asset	Hold %	Dollar Amount	ROR %	STD %	Begin Date	End Date	Income Tax %	Capital Gains Tax %	Turnover %	Trans. Fees %	Mng Fees %	Tax	Yield % (Dividends & Interest)
PORTFOLIO TOTALS	0.00	0	0.00	0.00			0.00	0.00	0.00	0.00	0.00		0.00

Empty asset list.
[Click here to add assets into portfolio.](#)
[Click here to add securities from CSV file.](#)

* Allocations to an Asset Class and Subclass are expressed as a percentage of the Portfolio Value

Done Trusted sites

Click "Click here to add securities from CSV file."

Import Asset List from CSV file - Microsoft Internet Explorer

Import Asset List from CSV file

1. Download editable sample Excel File (XLS): [click here](#)
OR Download Blank Excel Import Template (CSV): [click here](#)
2. Fill it using your data and save as a .CSV file
3. Select your CSV file:

What does the Value column refer to?

Dollar amount
 % of portfolio
 #Shares

How will these securities be classified?

AW Classification
 Firm Classification *If the security doesn't have the classification specified, AW classification will be used.*
 My Classification
 Style

Use security history in calculations?

Yes
 No

Use asset class history if security history is less than: months

4. Click "Continue"

You have the option of either downloading an editable Excel File or a blank CSV file. Let's take a look at the Excel file first.

http://ice.advisoryworld.com/ICE/portfolio/portfolio.xls - Microsoft Internet Explorer

File Edit View Insert Format Tools Data Acrobat Go To Favorites Help

Address http://ice.advisoryworld.com/ICE/portfolio/portfolio.xls

A12

1 **Fill this sample table using your data and save it as a .CSV file.**

2 Enter **TICKER** or **CUSIP**.

3 **VALUE** may be a dollar amount, percent of portfolio or number of shares. You will be asked about its sense. These columns are optional and can be left blank. The default portfolio settings will be used.

4	Ticker Symbol	CUSIP	Value	Income Tax %	Capital Gains Tax %	Turnover %	Trans. Fees %	Mng Fees %	Taxable (Type "y" if taxable "n" if non-taxable)	Yield %
5	IBF		2000.00							3.00
6	PCTI		1000.00			70.00				
7		123456	10000.00				5.00	1.78	n	2.00
8	CORI		10000.00	5.00	10.00	50.00			y	
9		G48215	15000.00							
10		ZB1535153	12000.00							
11		9999999ZXCVB	6000.00			10.00			n	
12										
13										
14										
15										
16										
17										
18										
19										
20										
21										
22										
23										

Securities / Unknown Zone

This file shows a sample using tickers, CUSIPS and values in dollar amount. You have the flexibility to enter dollar amounts, number of shares or percentage of the portfolio in the value column. All columns to the right of Value are optional (i.e. taxes etc.). You can simply enter your positions into this spreadsheet and then save it for import.

Import Asset List from CSV file - Microsoft Internet Explorer

Import Asset List from CSV file

1. Download editable sample Excel File (XLS): [click here](#)
OR Download Blank Excel Import Template (CSV): [click here](#)
2. Fill it using your data and save as a .CSV file
3. Select your CSV file:

What does the Value column refer to?

Dollar amount
 % of portfolio
 #Shares

How will these securities be classified?

AW Classification
 Firm Classification *If the security doesn't have the classification specified, AW classification will be used.*
 My Classification
 Style

Use security history in calculations?

Yes
 No

Use asset class history if security history is less than: months

4. Click "Continue"

Now let's take a look at the CSV template.

1	A	B	C	D	E	F	G	H	I	J	K	L	M	N
1	Ticker Sym	CUSIP	Value	Income Ta	Capital Ga	Turnover %	Trans. Fee	Mng Fees	Taxable (T	Yield %				
2														
3														
4														
5														
6														
7														
8														
9														
10														
11														
12														
13														
14														
15														
16														
17														
18														
19														
20														
21														
22														
23														
24														
25														
26														
27														
28														
29														
30														
31														
32														

This file is blank in nature. You can enter your positions, similarly to the Excel file, and then save it for importing.

Import Asset List from CSV file - Microsoft Internet Explorer

Import Asset List from CSV file

1. Download editable sample Excel File (XLS): [click here](#)
OR Download Blank Excel Import Template (CSV): [click here](#)
2. Fill it using your data and save as a .CSV file
3. Select your CSV file:

What does the Value column refer to?

Dollar amount
 % of portfolio
 #Shares

How will these securities be classified?

AW Classification
 Firm Classification *If the security doesn't have the classification specified, AW classification will be used.*
 My Classification
 Style

Use security history in calculations?

Yes
 No

Use asset class history if security history is less than: months

4. Click "Continue"

After saving the file in CSV format, browse to its location. Your next task is to select the nature of your Value column. Now select how you'd like to classify the securities... if 1 or more of the securities does not have the classification selected you will be prompted to make a change at a later screen.

Import Asset List from CSV file - Microsoft Internet Explorer

Import Asset List from CSV file

- Download editable sample Excel File (XLS): [click here](#)
OR Download Blank Excel Import Template (CSV): [click here](#)
- Fill it using your data and save as a .CSV file
- Select your CSV file:

What does the Value column refer to?

Dollar amount
 % of portfolio
 #Shares

How will these securities be classified?

AW Classification
 Firm Classification *If the security doesn't have the classification specified, AW classification will be used.*
 My Classification
 Style

Use security history in calculations?

Yes Use asset class history if security history is less than: months
 No

- Click "Continue"

Finally you can determine whether or not you'd like to use the security returns vs. the asset class returns for the portfolio. You can also define that you'd like to use asset class history if products do not go back further than a specified range by entering a number of months. *If you do not subscribe to the security databases then asset class returns will automatically be used. Press Continue when done.

Import Asset List from CSV file -- Step 2 - Microsoft Internet Explorer

The Securities

		Ticker	CUSIP	Name	Classification
The following securities have been imported successfully. You can replace them or change classification					
del	change	MSFT	594918104	MICROSOFT CORP	Wilshire Large Co Growth
del	change	ORCL	68389X105	ORACLE CORP	Wilshire Mid-Cap Growth
del	change	INTC	458140100	INTEL CORP	Wilshire Large Co Growth
del	change	CSCO	17275R102	CISCO SYSTEMS	Wilshire Large Co Growth
del	change	C	172967101	CITIGROUP INC	Wilshire Large Co Value
del	change	T	001957109	AT&T CORP	Wilshire Large Co Growth
del	change	WMT	931142103	WAL-MART STORES	Wilshire Large Co Value

*These securities did not have the specified classification and the Advisory World class was used as an alternate. You can change it by clicking the "change" link or after importing by clicking on Add/Edit Assets and Classify

The securities for import list will result. You have the option to delete or change any of them. After making any necessary changes press Import.

The screenshot shows the 'Portfolio Builder' interface in Microsoft Internet Explorer. The browser address bar shows 'http://ice.advisoryworld.com/ICE/portfolio/portbuilder.html'. The page header includes 'Advisory World | Portfolio Builder - Microsoft Internet Explorer' and navigation links like 'Home', 'Clients & Portfolios', 'Add/Edit Assets', 'Cash Flow & Plan Analysis', 'Optimize Portfolio', 'Reports', and 'Help'. The main content area displays a table of assets with columns for 'Asset', 'Hold %', 'Dollar Amount', 'ROR %', 'STD %', 'Begin Date', 'End Date', 'Income Tax %', 'Capital Gains Tax %', 'Turnover %', 'Trans. Fees %', 'Mng Fees %', 'Tax', and 'Yield % (Dividends & Interest)'. A red box highlights the 'Domestic Equities: Indices' section, which includes sub-sections like 'WLG Withshire Large Co Growth' and 'WLY Withshire Large Co Value', each listing individual stocks with their respective share counts and values.

Asset	Hold %	Dollar Amount	ROR %	STD %	Begin Date	End Date	Income Tax %	Capital Gains Tax %	Turnover %	Trans. Fees %	Mng Fees %	Tax	Yield % (Dividends & Interest)
PORTFOLIO TOTALS	100.00	\$6,000	30.45	34.70	10/1991	06/2004	0.00	0.00	0.00	0.00	0.00		0.46
Domestic Equities: Indices.	100.00	\$6,000											
WLG Withshire Large Co Growth	60.71	34,000											
By security													
MSFT MICROSOFT CORP	3.57	2,000	26.01	47.83	10/1991	06/2004	0.00	0.00	100.00	0.00	0.00		3.00
(\$28.49 per share as of 07/31/2004)													
INTC INTEL CORP	17.86	10,000	40.24	55.99	10/1991	06/2004	0.00	0.00	100.00	5.00	1.78		2.00
(\$24.38 per share as of 07/31/2004)													
CSCO CISCO SYSTEMS	17.86	10,000	57.55	69.53	10/1991	06/2004	5.00	10.00	50.00	0.00	0.00		0.00
(\$20.92 per share as of 07/31/2004)													
AT&T CORP	21.43	12,000	4.13	37.06	10/1991	06/2004	0.00	0.00	100.00	0.00	0.00		0.00
(\$15.10 per share as of 07/31/2004)													
WMC Withshire Mid-Cap Growth	1.79	1,000											
By security													
ORCL ORACLE CORP	1.79	1,000	60.51	106.28	10/1991	06/2004	0.00	0.00	70.00	0.00	0.00		0.00
(\$10.51 per share as of 07/31/2004)													
WLY Withshire Large Co Value	37.50	21,000											
By security													
C_CITIGROUP INC	26.79	15,000	31.02	37.64	10/1991	06/2004	0.00	0.00	100.00	0.00	0.00		0.00
(\$44.09 per share as of 07/31/2004)													
WMT WAL-MART STORES	10.71	6,000	16.68	31.16	10/1991	06/2004	0.00	0.00	10.00	0.00	0.00		0.00
(\$53.01 per share as of 07/31/2004)													

* Allocations to an Asset Classes and Securities are expressed as a percentage of the Portfolio Value

The Portfolio Builder now displays all of the assets.

If you have any questions regarding this or any feature of ICE please feel free to contact us.

-Team AdvisoryWorld
 818-999-0015
 support@advisoryworld.com