

Import your Investigo client data to ICE

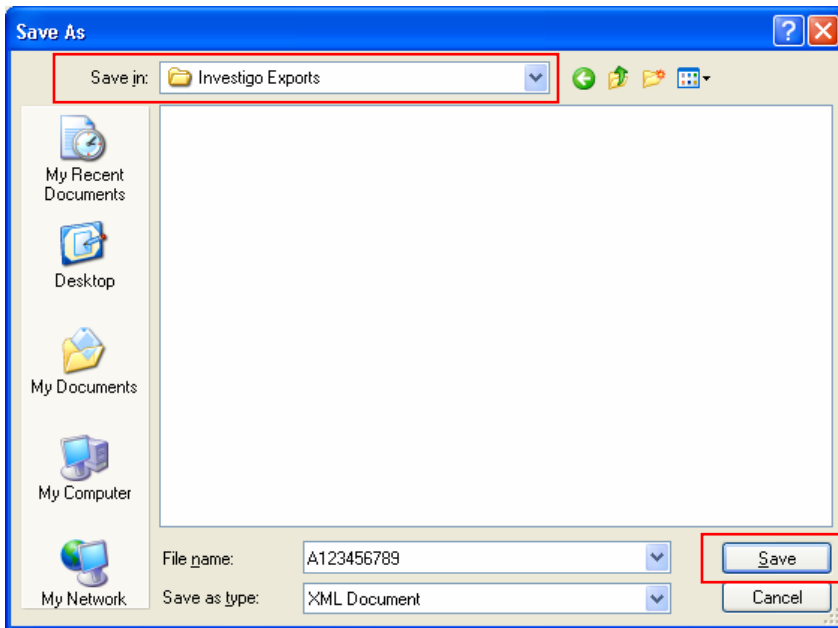
The screenshot shows the 'Group Holdings' page in Microsoft Internet Explorer. The browser address bar displays 'http://next.investigo.net/web/Account/Group/GroupHoldings.aspx?GroupID=141B49507D1D7080'. The page header includes 'NEXT View' and 'Advanced' search. A navigation menu contains 'System Administration | Reports | Communication | Tools | Action | Help'. The main content area is titled 'Group Holdings' and shows 'Floyd Faber' with a 'Group Description' section. A 'Tools' menu is open, listing options: 'Group Organizer', 'Contact Organizer', 'Create Morningstar Export', 'Send to Advisory World' (highlighted with a red box), 'Create an Excel Export', and 'Work Flow'. Below the menu is a table of accounts with columns for 'Product Company', 'Account Type', 'Market Value', 'Registration', and 'Actions'. The table lists various funds and annuities, with a total value of \$298,809.45 and a gain/loss of \$28,626.01. The Windows taskbar at the bottom shows the 'start' button and the time '10:44 AM'.

Product Company	Account Type	Market Value	Registration	Actions
Munder Funds	JTWROS	\$1,147.42	827	(remove)
Seligman Funds	Joint Tenants in Common	\$25,499.25	827	(remove)
American Funds	IRA - Rollover	\$91,848.51	827	(remove)
American Funds	IRA - Roth	\$23,829.67	827	(remove)
American Funds	IRA - Roth	\$33,143.08	827	(remove)
American Funds	IRA - Roth	\$0.00	827	(remove)
American Funds	IRA - Rollover	\$16,621.30	827	(remove)
Alger Funds	Joint Tenants in Common	\$17,278.71	827	(remove)
Nationwide	Individual	\$21,184.94	479529520	(remove)
Wells REIT/LP Products	Individual	\$13,023.27	017452	(remove)
ING Variable Annuities	Individual	\$55,233.30	479529520	(remove)
Total Value:		\$298,809.45	Gain/Loss:	\$28,626.01

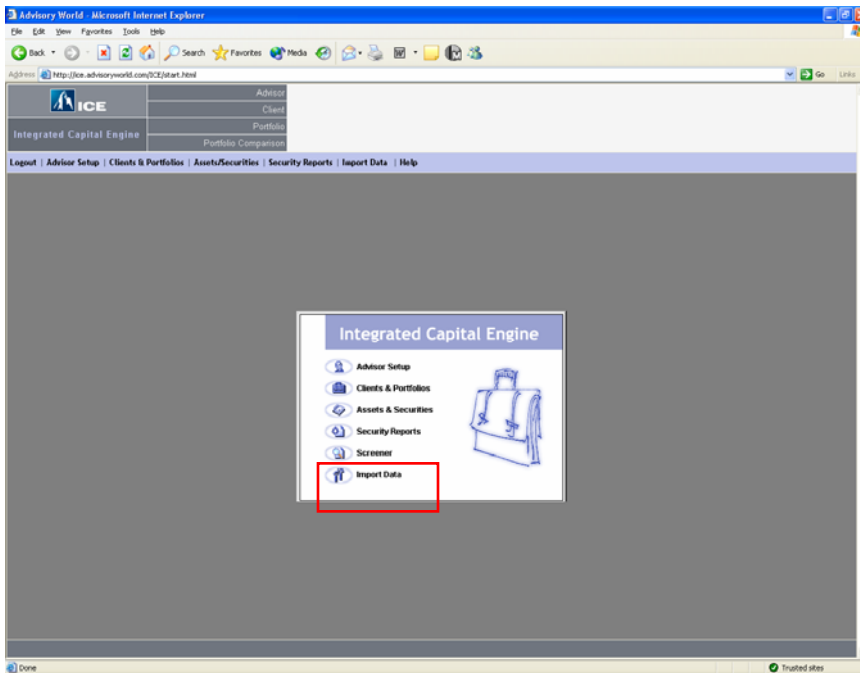
Open a client in Investigo, click Tools and then and click Send to AdvisoryWorld.

The screenshot shows a 'File Download' dialog box with the title 'Do you want to open or save this file?'. It displays a file icon, the name '{1a6f1344-7bf9-4c94-a20f-b09984544123}.XML', the type 'XML Document, 13.9 KB', and the source 'From: next.investigo.net'. There are three buttons: 'Open', 'Save' (highlighted with a red box), and 'Cancel'. At the bottom, there is a warning message: 'While files from the Internet can be useful, some files can potentially harm your computer. If you do not trust the source, do not open or save this file. [What's the risk?](#)'

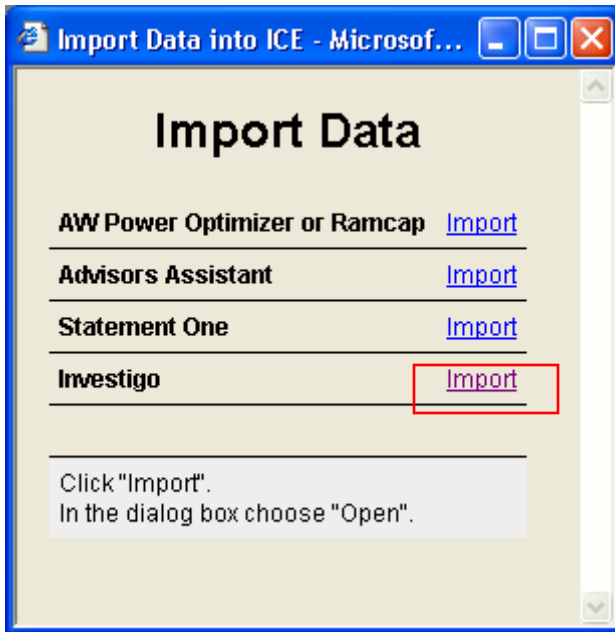
Save the file to your computer's hard drive.



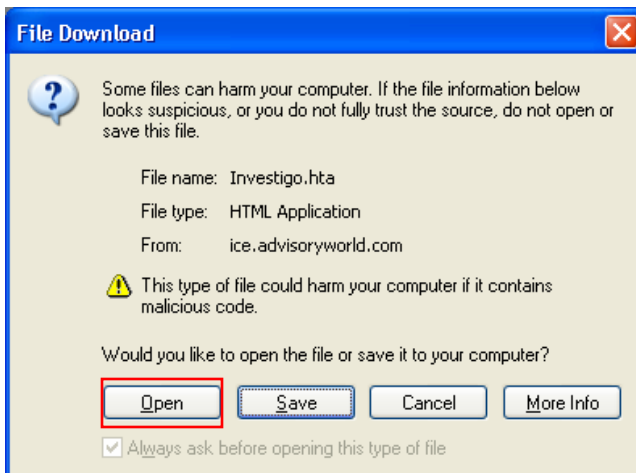
We recommend that you save them into a new file folder for quick import selection.



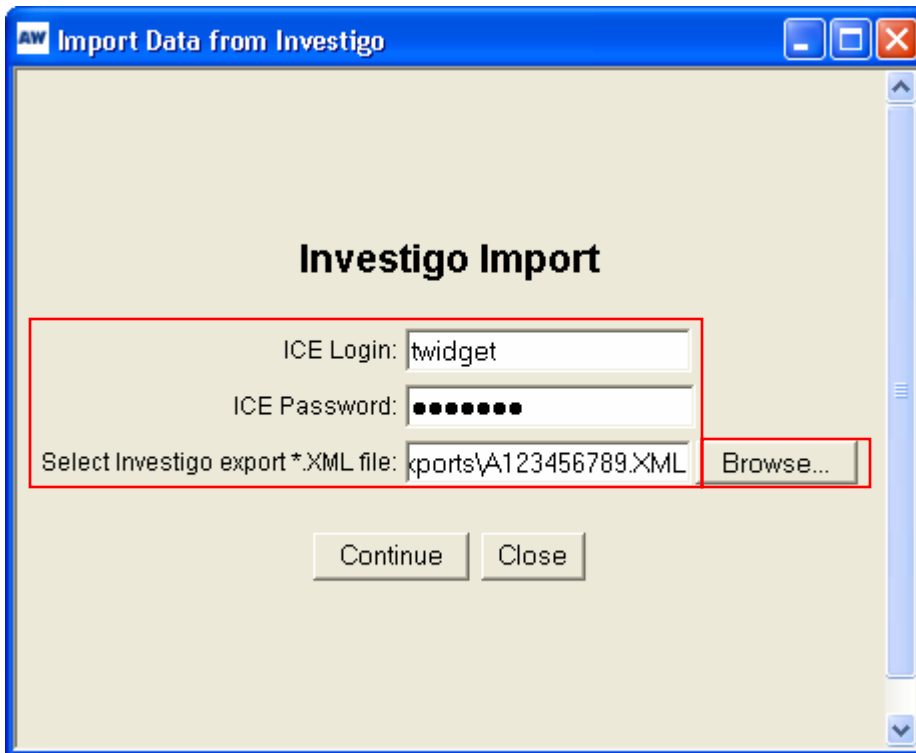
Login to ICE and click on Import Data.



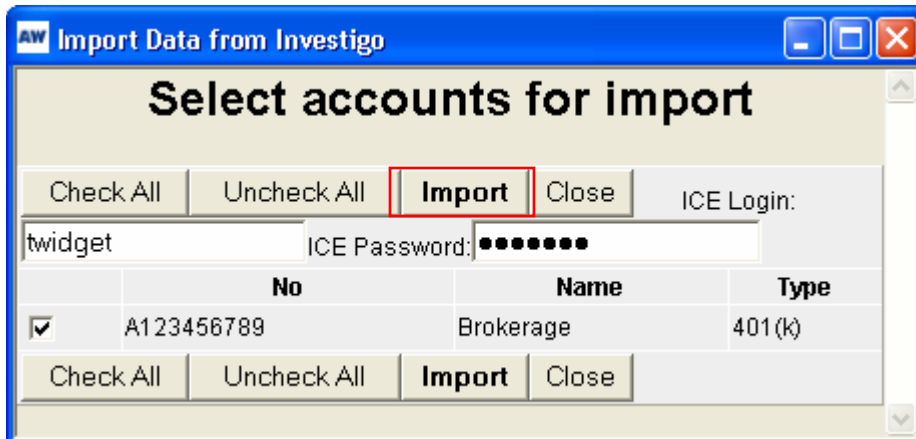
Click on Import next to Investigo.



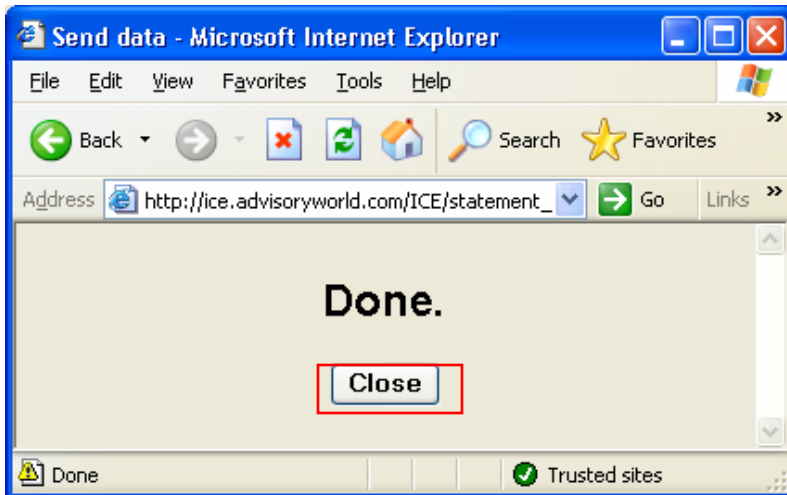
Choose Open.



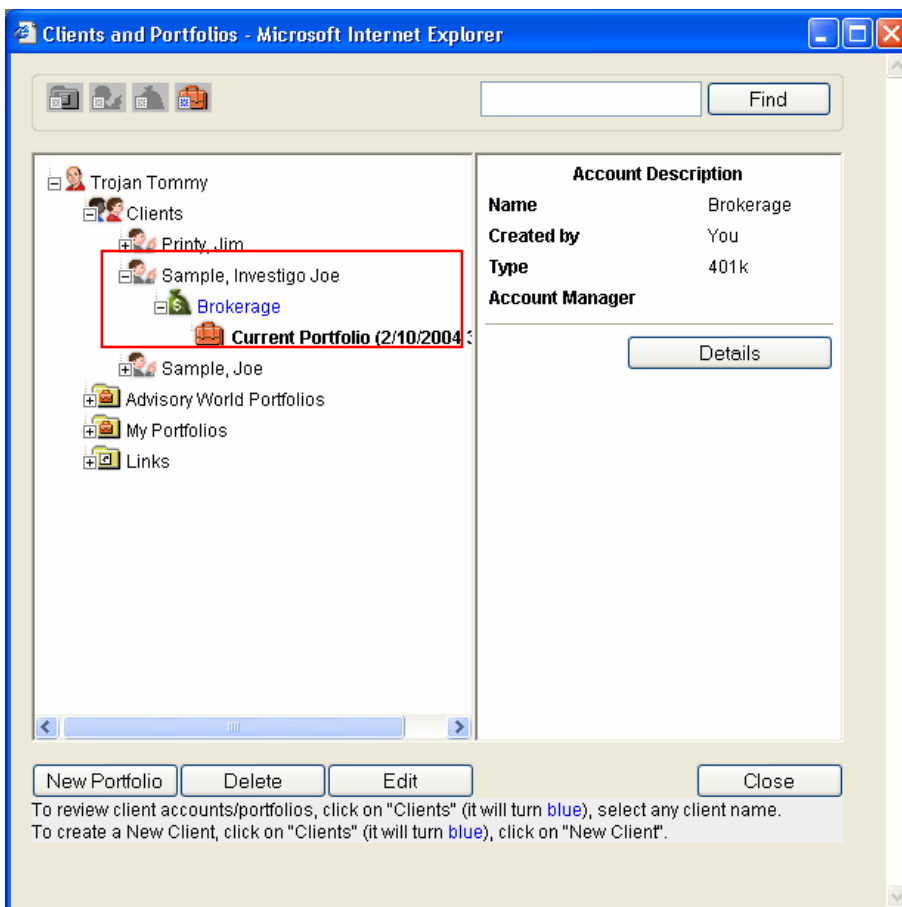
Enter your ICE Username and Password and locate the file that you'd like to Import by clicking on Browse.



Verify the account number then press Import.



Press Close after this notice pops-up.



Now your client's account is listed and can be used with the ICE application.

If you have any questions regarding this or any of ICE's features please feel free to contact us. We appreciate your time and business.

800-480-3888 | www.**AdvisoryWorld**.com | info@advisoryworld.com