



## SCANalytics Report Library

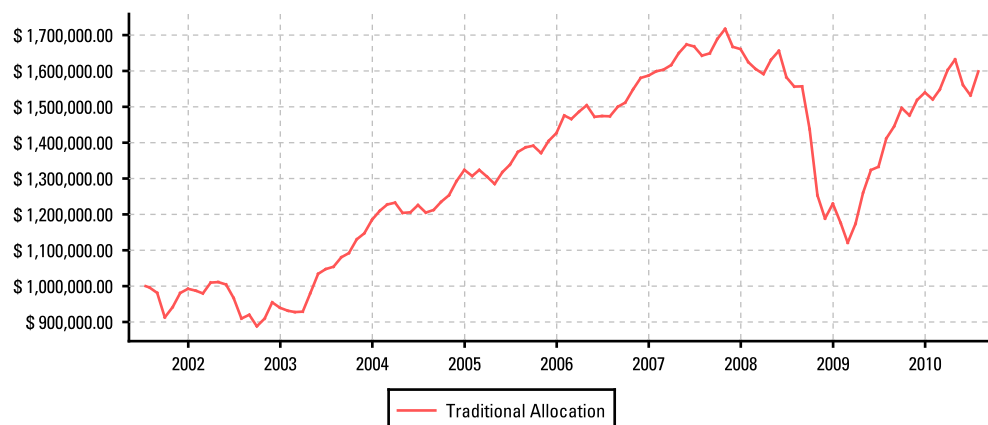
### AdvisoryWorld SCANalytics Reports

Hypothetical Report.....	2
HoldingScan Report .....	3-4
CompariScan Report .....	5-7
Risk Report .....	8-10
Detailed Analytics .....	11-13
Returns Based Style Analysis .....	14
Monte Carlo Simulation .....	15
Fact Sheets .....	16-17

# Hypothetical Illustration

7/17/01 to 7/31/10

## Performance



Traditional Allocation

### Performance

Net Investments	\$1,000,000.00
Ending Market Value	\$1,598,754.65
Cumulative Return	59.88 %
Average Annualized	5.32 %

### Assumptions

	Income Tax	Cap. Gains Tax
Federal		
State		
Account Type		<b>Taxable</b>
Tax Payment Source		<b>None</b>
Fee Payment Source		<b>Out of Pocket</b>
Rebalancing Rate		<b>Quarterly</b>

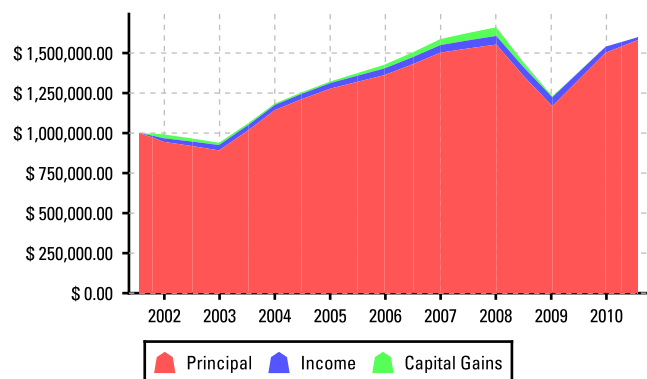
## Summary

	Beginning Value	Contributions	Withdrawals & Distributions	Total Reinvestment	Charges & Fees	Taxes	Ending Market Value	Cumulative Return
Traditional Allocation	\$1,000,000.00	-	-	\$555,012.88	\$13,993.63	-	\$1,598,754.65	59.88 %

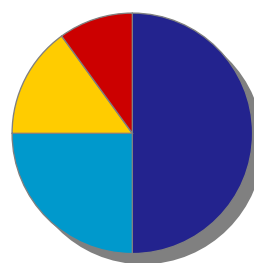
## Detailed Performance Traditional Allocation

Time Horizon	Beginning Value	Contributions	Withdrawals & Distributions	Total Reinvestment	Charges & Fees	Taxes	Ending Market Value	Cumulative Return
07/17/01 - 12/31/01	\$1,000,000.00	-	-	\$46,524.96	\$12,750.00	-	\$992,542.15	-0.75 %
01/01/02 - 12/31/02	\$992,542.15	-	-	\$47,933.07	\$530.11	-	\$939,507.94	-5.34 %
01/01/03 - 12/31/03	\$939,507.94	-	-	\$40,911.42	\$713.52	-	\$1,185,239.59	26.16 %
01/01/04 - 12/31/04	\$1,185,239.59	-	-	\$45,113.67	\$0.00	-	\$1,324,049.94	11.71 %
01/01/05 - 12/31/05	\$1,324,049.94	-	-	\$64,689.58	\$0.00	-	\$1,426,873.46	7.77 %
01/01/06 - 12/31/06	\$1,426,873.46	-	-	\$84,715.50	\$0.00	-	\$1,587,139.62	11.23 %
01/01/07 - 12/31/07	\$1,587,139.62	-	-	\$107,821.64	\$0.00	-	\$1,660,908.97	4.65 %
01/01/08 - 12/31/08	\$1,660,908.97	-	-	\$61,760.44	\$0.00	-	\$1,229,880.43	-25.95 %
01/01/09 - 12/31/09	\$1,229,880.43	-	-	\$37,784.63	\$0.00	-	\$1,540,010.48	25.22 %
01/01/10 - 07/31/10	\$1,540,010.48	-	-	\$17,757.97	\$0.00	-	\$1,598,754.65	3.81 %

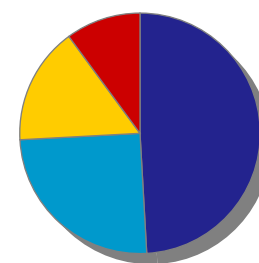
## Accumulation Detail



## Investment Allocation with Quarterly Rebalancing



Beginning: 7/17/01



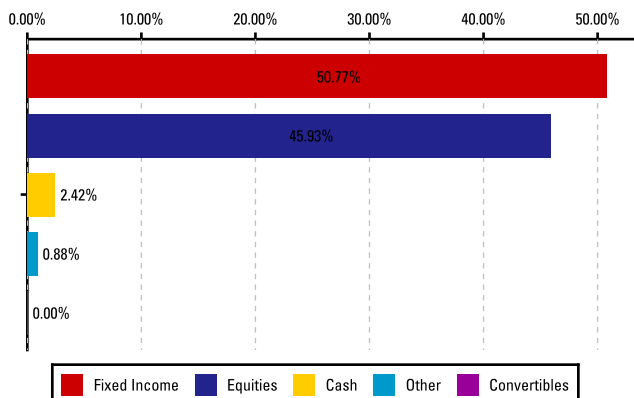
Ending: 7/31/10

©AdvisoryWorld, Inc. All Rights Reserved. The Information and analysis contained herein (1) Include the confidential and proprietary information of AdvisoryWorld, Inc. and Lipper, (2) may not be copied or redistributed, (3) do not constitute investment advice offered by AdvisoryWorld, Inc. and Lipper, (4) are provided solely for informational purposes and therefore are not an offer to buy or sell a security, (5) are not warranted to be correct, complete or accurate and (6) no part of AdvisoryWorld, Inc. and Lipper compensation was, is, or will be, directly or indirectly, related to the specific recommendations or views expressed in this research report. AdvisoryWorld, Inc. and Lipper shall not be held responsible for any trading decisions, damages or other losses resulting from, or related to, this information, data or analysis and their use. This report is supplemental sales literature.

# HoldingScan – Portfolio Report

Data as of 9/3/10

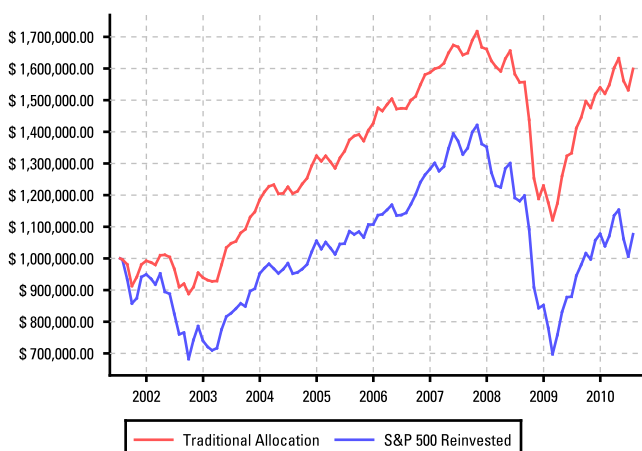
## Macro Allocation



## Asset Allocation

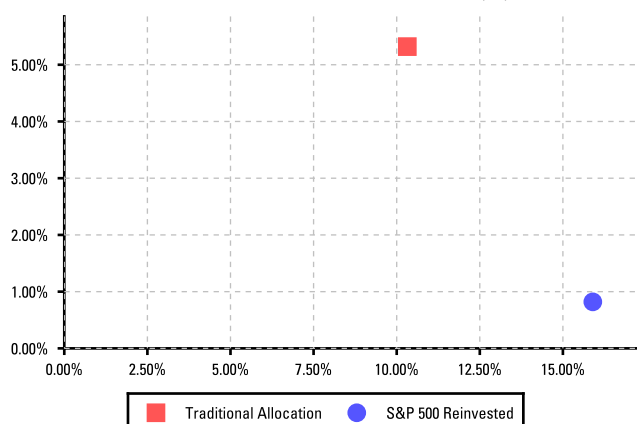


## Trailing Performance 7/17/01-7/31/10



## Risk vs. Return

Annualized Return & Standard Deviation Since 7/17/01



	1 Year	3 Years	5 Years	Since 7/17/01
Cumulative Return	13.24%	-2.68%	16.35%	59.88%
Benchmark	13.84%	-18.97%	-0.85%	7.65%
Annualized Return	-	-0.90%	3.07%	5.32%
Benchmark	-	-6.77%	-0.17%	0.82%
Risk Adjusted	7.67%	-10.20%	5.60%	14.94%

	1 Year	3 Years	5 Years	Since 7/17/2001
Standard Deviation	8.89%	14.01%	11.31%	10.32%
Benchmark StDev	15.95%	20.83%	16.88%	15.90%
Sharpe Ratio	1.46	-0.20	-0.01	0.26
Alpha	0.06	0.08	0.11	0.45
Beta	0.54	0.65	0.64	0.61
R2	0.95	0.93	0.91	0.87

## Best & Worst Case Analysis

	3 Months	1 Year	3 Years
Best Period	3/1/09-5/31/09	3/1/09-2/28/10	4/1/03-3/31/06
Cumulative Return	18.08%	38.10%	60.06%
Benchmark	25.80%	53.55%	61.03%
Worst Period	9/1/08-11/30/08	3/1/08-2/28/09	3/1/06-2/28/09
Cumulative Return	-23.67%	-30.17%	-23.53%
Benchmark	-29.64%	-43.29%	-38.79%

## Performance Disclosure

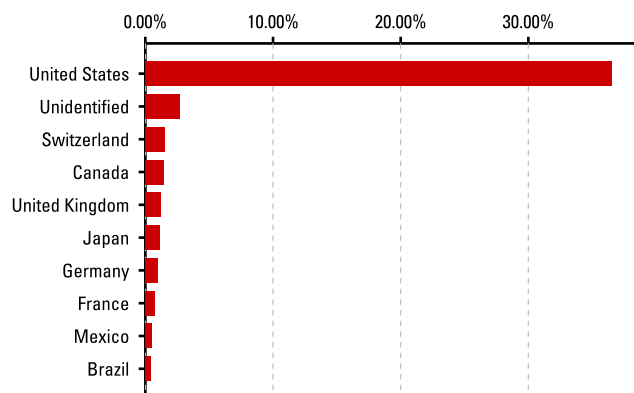
The Performance Data quoted represents past performance and does not guarantee future results. The investment return and principal value of an investment will fluctuate; thus an investor's shares, when redeemed, may be worth more or less than their original cost. Current performance may be higher or lower than return data quoted herein.

See Open End Mutual Fund Holding Returns – Standardized Returns

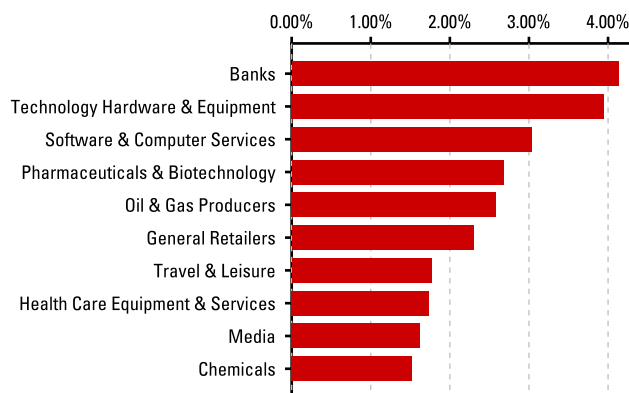
©AdvisoryWorld, Inc. All Rights Reserved. The Information and analysis contained herein (1) Include the confidential and proprietary information of AdvisoryWorld, Inc. and Lipper, (2) may not be copied or redistributed, (3) do not constitute investment advice offered by AdvisoryWorld, Inc and Lipper, (4) are provided solely for informational purposes and therefore are not an offer to buy or sell a security, (5) are not warranted to be correct, complete or accurate and (6) no part of AdvisoryWorld, Inc. and Lipper compensation was, is, or will be, directly or indirectly, related to the specific recommendations or views expressed in this research report. AdvisoryWorld, Inc. and Lipper shall not be held responsible for any trading decisions, damages or other losses resulting from, or related to, this information, data or analysis and their use. This report is supplemental sales literature.

Equity Properties			Fixed Income Properties				Metrics		
Avg. Market Capitalization	<b>\$40,652,388,108</b>	Avg. 3 Year Return on Total Equity	<b>13.50%</b>	Avg. Coupon	<b>5.08%</b>	Avg. Duration	<b>4.45</b>	12 Month Yield	<b>8.55%</b>
Avg. Price to Earnings	<b>20.98</b>	Avg. 3 Year Return on Capital	<b>8.00%</b>	AAA	<b>44.68%</b>	AA	<b>4.34%</b>	Avg. Expense Ratio	<b>0.68%</b>
Avg. Price to Book	<b>2.86</b>	Avg. 3 Year Return on Assets	<b>5.60%</b>	A	<b>9.89%</b>	BBB	<b>12.86%</b>	Avg. Turnover	<b>57.25%</b>
Sales Growth 1 Year	<b>-3.10%</b>	Avg. 3 Year EPS Growth	<b>1.90%</b>	BB	<b>2.09%</b>	B	<b>2.33%</b>		
Earnings Growth 1 Year	<b>14.50%</b>	Avg. 3 Year Operating Cash Flow	<b>11.90%</b>	Less than B	<b>1.61%</b>	Not Rated	<b>0.00%</b>		

### Top 10 Equity Countries



### Top 10 Equity Sectors



### Top 10 Equity Holdings (subject to change)

Equity Name (Symbol)	Portfolio % - Value	Holder Name (Symbol)	Holding As of Date	% of Portfolio	% of Holder's Portfolio
Microsoft Corp ORD (MSFT)	0.87% - \$8,675.00	American Funds Gro;A (AGTHX)	3/31/10	0.87%	3.47%
Oracle Corp ORD (ORCL)	0.76% - \$7,600.00	American Funds Gro;A (AGTHX)	3/31/10	0.76%	3.04%
Google Inc ORD (GOOG)	0.74% - \$7,400.00	American Funds Gro;A (AGTHX)	3/31/10	0.74%	2.96%
Apple Inc ORD (AAPL)	0.52% - \$5,225.00	American Funds Gro;A (AGTHX)	3/31/10	0.52%	2.09%
Cisco Systems Inc ORD (CSCO)	0.45% - \$4,525.00	American Funds Gro;A (AGTHX)	3/31/10	0.45%	1.81%
America Movil SAB de CV DR (AMX)	0.41% - \$4,085.00	American Funds EuPc;A (AEPGX)	3/31/10	0.26%	2.61%
		American Funds Gro;A (AGTHX)	3/31/10	0.15%	0.59%
Roche Holding AG ORD (RHHVF)	0.41% - \$4,080.00	American Funds Gro;A (AGTHX)	3/31/10	0.24%	0.96%
		American Funds EuPc;A (AEPGX)	3/31/10	0.17%	1.68%
Teva Pharmaceutical Industries Ltd DR (TEVA)	0.39% - \$3,940.00	American Funds Gro;A (AGTHX)	3/31/10	0.28%	1.12%
		American Funds EuPc;A (AEPGX)	3/31/10	0.11%	1.14%
Medtronic Inc ORD (MDT)	0.34% - \$3,350.00	American Funds Gro;A (AGTHX)	3/31/10	0.34%	1.34%
Barrick Gold Corp ORD (ABX)	0.33% - \$3,270.00	American Funds Gro;A (AGTHX)	3/31/10	0.30%	1.22%
		American Funds EuPc;A (AEPGX)	3/31/10	0.02%	0.22%

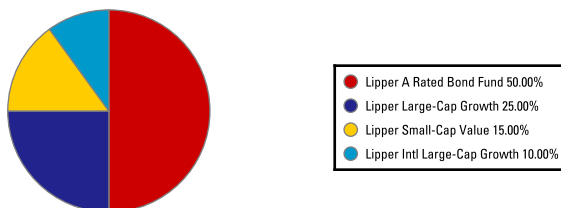
©AdvisoryWorld, Inc. All Rights Reserved. The Information and analysis contained herein (1) Include the confidential and proprietary information of AdvisoryWorld, Inc. and Lipper, (2) may not be copied or redistributed, (3) do not constitute investment advice offered by AdvisoryWorld, Inc and Lipper, (4) are provided solely for informational purposes and therefore are not an offer to buy or sell a security, (5) are not warranted to be correct, complete or accurate and (6) no part of AdvisoryWorld, Inc. and Lipper compensation was, is, or will be, directly or indirectly, related to the specific recommendations or views expressed in this research report. AdvisoryWorld, Inc. and Lipper shall not be held responsible for any trading decisions, damages or other losses resulting from, or related to, this information, data or analysis and their use. This report is supplemental sales literature.

# CompariScan

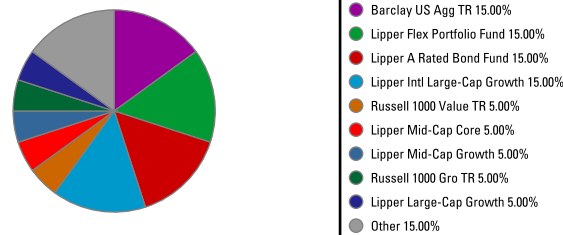
Data as of 9/3/2010

## Asset Allocation

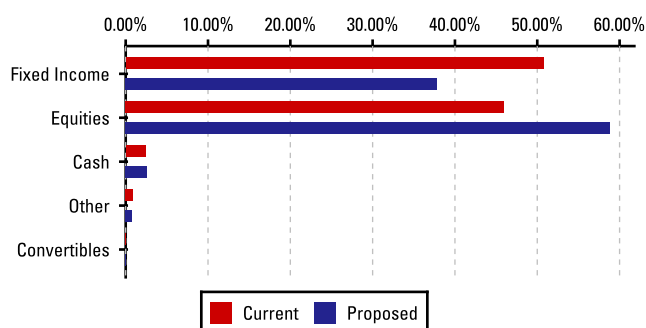
### Traditional Allocation (Current)



### Alternative Allocation (Proposed)



## Macro Allocation

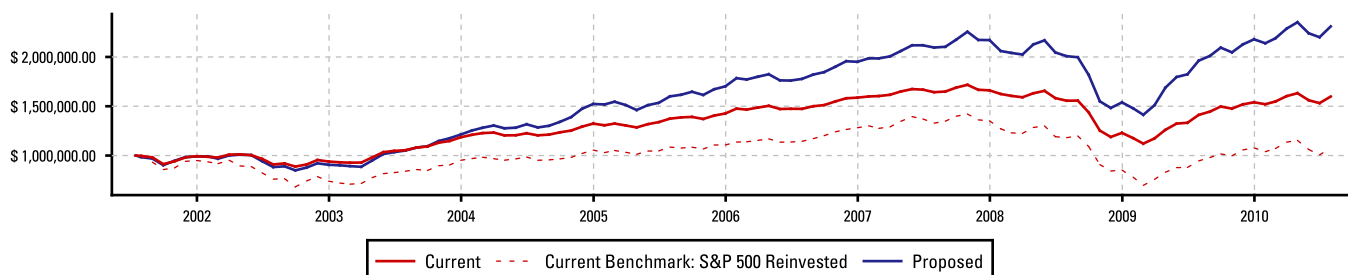


### Performance Disclosure

The Performance Data quoted represents past performance and does not guarantee future results. The investment return and principal value of an investment will fluctuate; thus an investor's shares, when redeemed, may be worth more or less than their original cost. Current performance may be higher or lower than return data quoted herein.

See Open End Mutual Fund Holding Returns – Standardized Returns

## Trailing Performance 7/17/2001-7/31/2010



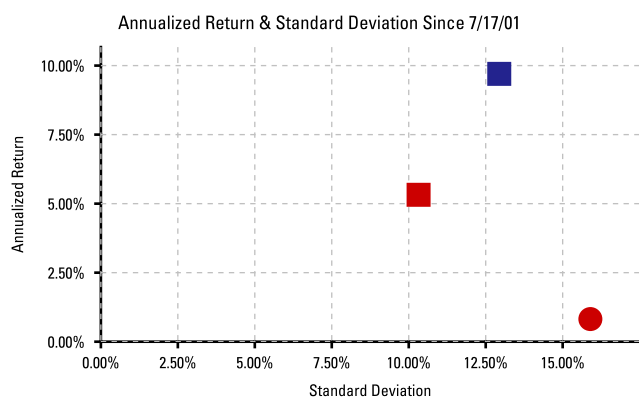
	1 Year	3 Years Cumulative	3 Years Annualized	5 Years Cumulative	5 Years Annualized	Since 7/17/01 Cumulative	Since 7/17/01 Annualized
Traditional Allocation (Current)	13.24%	-2.68%	-0.90%	16.35%	3.07%	59.88%	5.32%
S&P 500 Reinvested	13.84%	-18.97%	-6.77%	-0.85%	-0.17%	7.65%	0.82%
Alternative Allocation (Proposed)	17.75%	10.26%	3.31%	44.40%	7.62%	131.02%	9.70%

## Best & Worst Case Analysis

Current	3 Months			1 Year			3 Years		
	Best Period	Cumulative Return	Benchmark	Worst Period	Cumulative Return	Benchmark	Best Period	Cumulative Return	Benchmark
	3/1/09-5/31/09	18.08%	25.80%	9/1/08-11/30/08	-23.67%	-29.64%	3/1/09-5/31/09	27.12%	-25.75%
	3/1/09-2/28/10	38.10%	53.55%	3/1/08-2/28/09	-30.17%	-43.29%	3/1/09-2/28/10	54.91%	-31.76%
	4/1/03-3/31/06	60.06%	61.03%	3/1/06-2/28/09	-23.53%	-38.79%	4/1/03-3/31/06	103.13%	-20.22%
Proposed	3 Months			1 Year			3 Years		
	3/1/09-5/31/09	27.12%	9/1/08-11/30/08	-25.75%	3/1/09-2/28/10	54.91%	3/1/09-2/28/10	54.91%	-31.76%
	3/1/09-5/31/09	27.12%	9/1/08-11/30/08	-25.75%	3/1/09-2/28/10	54.91%	3/1/09-2/28/10	54.91%	-31.76%
	4/1/03-3/31/06	103.13%	3/1/06-2/28/09	-20.22%			4/1/03-3/31/06	103.13%	-20.22%

©AdvisoryWorld, Inc. All Rights Reserved. The Information and analysis contained herein (1) Include the confidential and proprietary information of AdvisoryWorld, Inc. and Lipper, (2) may not be copied or redistributed, (3) do not constitute investment advice offered by AdvisoryWorld, Inc and Lipper, (4) are provided solely for informational purposes and therefore are not an offer to buy or sell a security, (5) are not warranted to be correct, complete or accurate and (6) no part of AdvisoryWorld, Inc. and Lipper compensation was, is, or will be, directly or indirectly, related to the specific recommendations or views expressed in this research report. AdvisoryWorld, Inc. and Lipper shall not be held responsible for any trading decisions, damages or other losses resulting from, or related to, this information, data or analysis and their use. This report is supplemental sales literature.

## Risk vs. Return & MPT Statistics



Traditional Allocation (Current)	1 Year	3 Years	5 Years	Since 7/17/2001
Annualized Return	13.24%	-0.90%	3.07%	5.32%
Standard Deviation	8.89%	14.01%	11.31%	10.32%
Benchmark Return	13.84%	-6.77%	-0.17%	0.82%
Benchmark StDev	15.95%	20.83%	16.88%	15.90%
Sharpe Ratio	1.46	-0.20	-0.01	0.26
Alpha	0.06	0.08	0.11	0.45
Beta	0.54	0.65	0.64	0.61
R2	0.95	0.93	0.91	0.87

Alternative Allocation (Proposed)	1 Year	3 Years	5 Years	Since 7/17/2001
Annualized Return	17.75%	3.31%	7.62%	9.70%
Standard Deviation	10.69%	17.48%	14.17%	12.94%
Sharpe Ratio	1.63	0.08	0.31	0.55
Alpha	0.09	0.24	0.42	1.19
Beta	0.65	0.80	0.79	0.75
R2	0.93	0.91	0.89	0.84

## Equity Properties

	Current	Proposed
Avg. Market Capitalization	\$40,652,388,108	\$17,696,023,173
Avg. Price to Earnings	20.98	20.33
Avg. Price to Book	2.86	3.30
Sales Growth 1 Year	-3.10%	1.42%
Earnings Growth 1 Year	14.50%	25.00%
Avg. 3 Year Return on Total Equity	13.50%	15.56%
Avg. 3 Year Return on Capital	8.00%	6.50%
Avg. 3 Year Return on Assets	5.60%	6.18%
Avg. 3 Year EPS Growth	1.90%	5.08%
Avg. 3 Year Operating Cash Flow	11.90%	21.18%

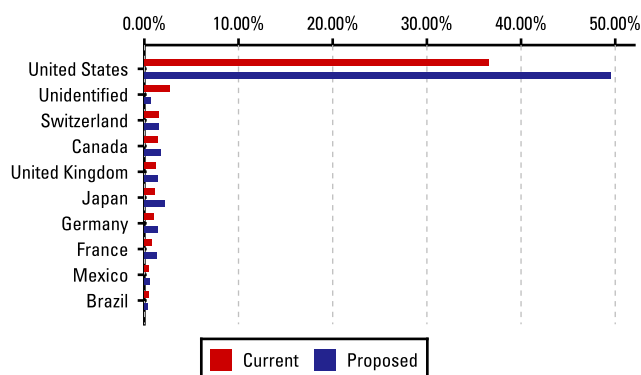
## Fixed Income Properties

	Current	Proposed
Avg. Coupon	5.08%	4.24%
Avg. Duration	4.45	4.60
AAA	44.68%	46.84%
AA	4.34%	4.53%
A	9.89%	8.77%
BBB	12.86%	9.08%
BB	2.09%	1.63%
B	2.33%	1.46%
Less than B	1.61%	1.10%
Not Rated	0.00%	0.00%

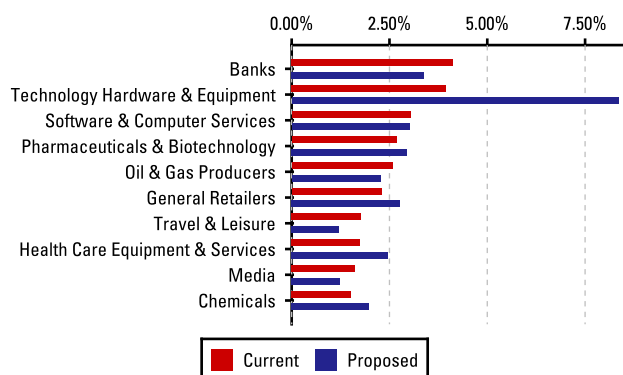
## Metrics

	Current	Proposed
12 Month Yield	8.55%	3.86%
Avg. Expense Ratio	0.68%	0.71%
Avg. Turnover	57.25%	110.83%

## Top 10 Equity Countries



## Top 10 Equity Sectors



**Top 10 Equity Holdings (subject to change) Traditional Allocation (Current)**

Equity Name (Symbol)	Portfolio % - Value	Holder Name (Symbol)	Holding As of Date	% of Portfolio	% of Holder's Portfolio
Microsoft Corp ORD (MSFT)	0.87% - \$8,675.00	American Funds Gro;A (AGTHX)	3/31/10	0.87%	3.47%
Oracle Corp ORD (ORCL)	0.76% - \$7,600.00	American Funds Gro;A (AGTHX)	3/31/10	0.76%	3.04%
Google Inc ORD (GOOG)	0.74% - \$7,400.00	American Funds Gro;A (AGTHX)	3/31/10	0.74%	2.96%
Apple Inc ORD (AAPL)	0.52% - \$5,225.00	American Funds Gro;A (AGTHX)	3/31/10	0.52%	2.09%
Cisco Systems Inc ORD (CSCO)	0.45% - \$4,525.00	American Funds Gro;A (AGTHX)	3/31/10	0.45%	1.81%
America Movil SAB de CV DR (AMX)	0.41% - \$4,085.00	American Funds EuPc;A (AEPGX)	3/31/10	0.26%	2.61%
		American Funds Gro;A (AGTHX)	3/31/10	0.15%	0.59%
Roche Holding AG ORD (RHHVF)	0.41% - \$4,080.00	American Funds Gro;A (AGTHX)	3/31/10	0.24%	0.96%
		American Funds EuPc;A (AEPGX)	3/31/10	0.17%	1.68%
Teva Pharmaceutical Industries Ltd DR (TEVA)	0.39% - \$3,940.00	American Funds Gro;A (AGTHX)	3/31/10	0.28%	1.12%
		American Funds EuPc;A (AEPGX)	3/31/10	0.11%	1.14%
Medtronic Inc ORD (MDT)	0.34% - \$3,350.00	American Funds Gro;A (AGTHX)	3/31/10	0.34%	1.34%
Barrick Gold Corp ORD (ABX)	0.33% - \$3,270.00	American Funds Gro;A (AGTHX)	3/31/10	0.30%	1.22%
		American Funds EuPc;A (AEPGX)	3/31/10	0.02%	0.22%

**Top 10 Equity Holdings (subject to change) Alternative Allocation (Proposed)**

Equity Name (Symbol)	Portfolio % - Value	Holder Name (Symbol)	Holding As of Date	% of Portfolio	% of Holder's Portfolio
Apple Inc (AAPL)	5.10% - \$51,045.00	Apple Inc (AAPL)	-	5.00%	100.00%
		American Funds Gro;A (AGTHX)	3/31/10	0.10%	2.09%
Intl Bus. Machines (IBM)	2.53% - \$25,280.00	Intl Bus. Machines (IBM)	-	2.50%	100.00%
		American Funds Gro;A (AGTHX)	3/31/10	0.03%	0.56%
Ford Motor (F)	2.50% - \$25,000.00	Ford Motor (F)	-	2.50%	100.00%
American Italian Pasta Co ORD (AIPC)	1.15% - \$11,510.00	Bruce Fund (BRUFEX)	6/30/10	1.14%	7.59%
		iShares:Russ 2000 Val (IWN)	6/30/10	0.01%	0.19%
		iShares:Russ 2000 Gr (IWO)	6/30/10	0.00%	0.06%
America Service Group Inc ORD (ASGR)	0.71% - \$7,065.00	Bruce Fund (BRUFEX)	6/30/10	0.70%	4.70%
		iShares:Russ 2000 Gr (IWO)	6/30/10	0.00%	0.03%
Airboss of America Corp ORD (ABSSF)	0.59% - \$5,865.00	Bruce Fund (BRUFEX)	6/30/10	0.59%	3.91%
AMERCO ORD (UHAL)	0.47% - \$4,685.00	Bruce Fund (BRUFEX)	6/30/10	0.46%	3.09%
		iShares:Russ 2000 Val (IWN)	6/30/10	0.00%	0.10%
America Movil SAB de CV DR (AMX)	0.42% - \$4,210.00	American Funds EuPc;A (AEPGX)	3/31/10	0.39%	2.61%
		American Funds Gro;A (AGTHX)	3/31/10	0.03%	0.59%
Fidelity Instl Treasury Only Portfolio;I	0.41% - \$4,065.00	Bruce Fund (BRUFEX)	6/30/10	0.41%	2.71%
Kinross Gold Corp ORD (KGC)	0.34% - \$3,380.00	Bruce Fund (BRUFEX)	6/30/10	0.33%	2.19%
		Fidelity Adv GI Cap;A (FGEAX)	5/31/10	0.01%	0.19%

©AdvisoryWorld, Inc. All Rights Reserved. The Information and analysis contained herein (1) include the confidential and proprietary information of AdvisoryWorld, Inc. and Lipper, (2) may not be copied or redistributed, (3) do not constitute investment advice offered by AdvisoryWorld, Inc. and Lipper, (4) are provided solely for informational purposes and therefore are not an offer to buy or sell a security, (5) are not warranted to be correct, complete or accurate and (6) no part of AdvisoryWorld, Inc. and Lipper compensation was, is, or will be, directly or indirectly, related to the specific recommendations or views expressed in this research report. AdvisoryWorld, Inc. and Lipper shall not be held responsible for any trading decisions, damages or other losses resulting from, or related to, this information, data or analysis and their use. This report is supplemental sales literature.

Powered by **AdvisoryWorld**  
FINANCIAL TECHNOLOGY

If applicable, this report must be accompanied by a prospectus, or equivalent, and disclosure statement.

Redistribution or reproduction is prohibited without written permission.

# Detailed Analytics

Data as of 9/2/2011

## Modern Portfolio Theory Analysis (5/11/87 – 7/31/11)

	Current	Proposed
Cumulative Rate of Return	567.26%	2,157.49%
Rate of Return (Annualized)	8.14%	13.72%
Standard Deviation	8.90%	14.04%
Sharpe Ratio	0.47	0.70
Lower Limit of 90% Confidence Level	-5.84%	-7.81%
Upper Limit of 90% Confidence Level	23.37%	38.17%
Beginning Portfolio Value	\$20,000.00	\$20,000.00
Value in 5 Years	\$29,583.58	\$38,039.12
Value in 10 Years	\$43,759.41	\$72,348.75
Value in 15 Years	\$64,728.00	\$137,604.15
One-year 90% Value at Risk	\$11,651.92	\$7,910.06
Probability of:		
Loss in 1 year	18.00%	16.42%
Loss in 5 years	2.03%	1.44%
Falling Below Minimum ROR	5.00%	5.00%
Losing Purchasing Power		
Over 1 Year	18.09%	16.48%
Over 5 Years	2.07%	1.46%

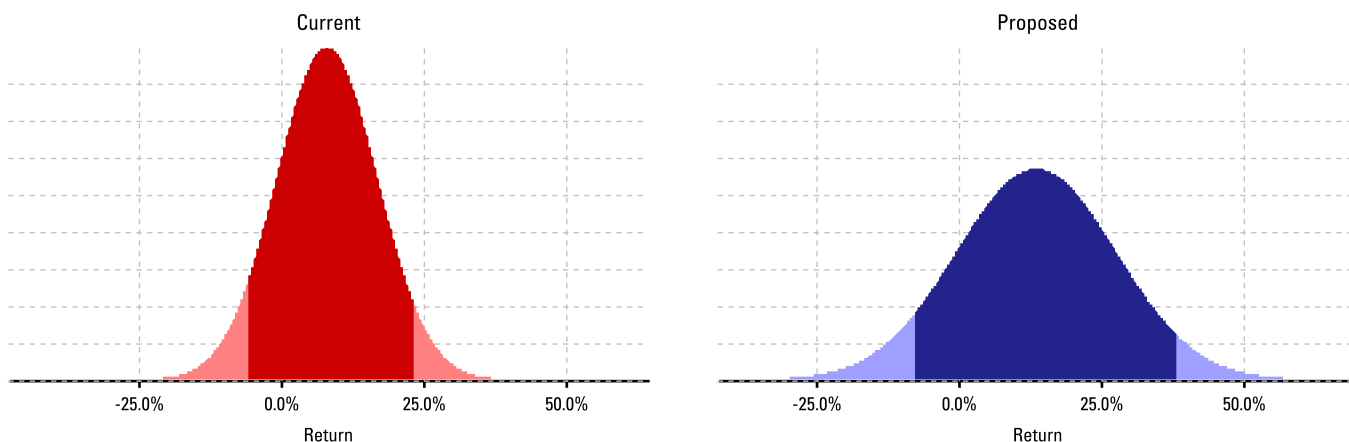
### Confidence Intervals & Probability

A term used in inferential statistics that measures the probability that a population parameter will fall between two set values. The confidence interval can take any number of probabilities, with the most common being 90%, 95% or 99%. In other words, a confidence interval is the probability that a value will fall between an upper and lower bound of a probability distribution.

**IMPORTANT: The projections or other information regarding the likelihood of various investment outcomes are hypothetical in nature, do not reflect actual investment results and are not guarantees of future results. Results may vary over time.**

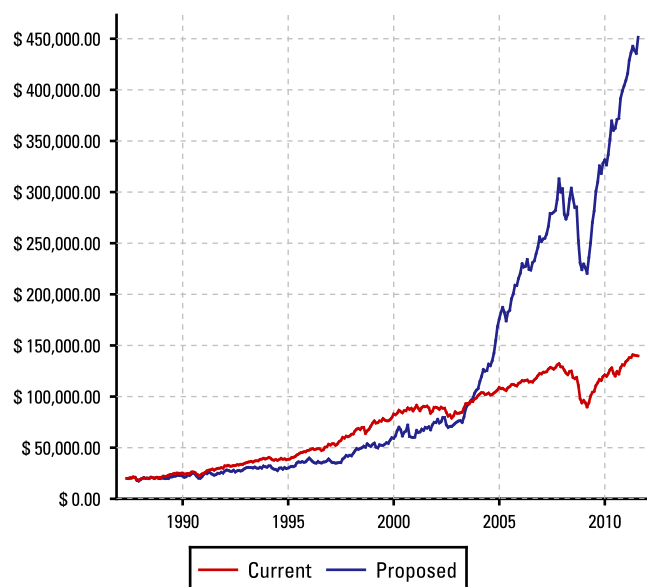
The Performance Data quoted represents past performance and does not guarantee future results. The investment return and principal value of an investment will fluctuate; thus an investor's shares, when redeemed, may be worth more or less than their original cost. Current performance may be higher or lower than return data quoted herein.

### Normal Distribution of Returns with 90% Probability

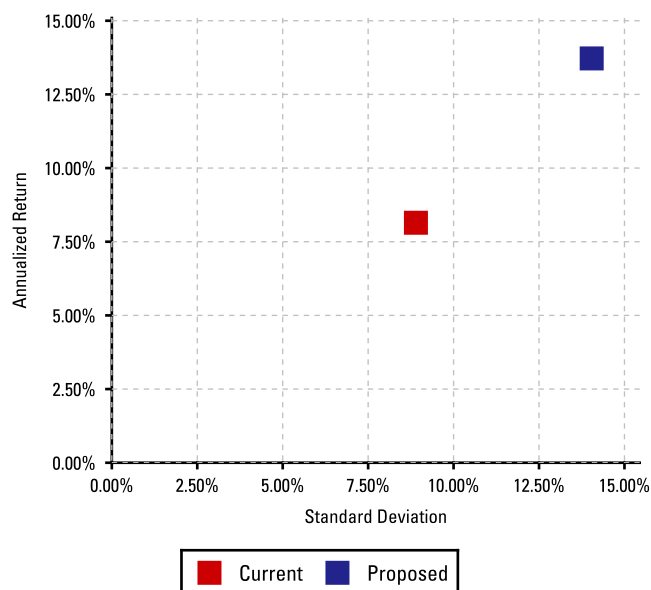


	Cumulative Rate of Return	Rate of Return (Annualized)	Standard Deviation	Lower Limit of 90% Confidence	Upper Limit of 90% Confidence
Current	567.26%	8.14%	8.90%	-5.84%	23.37%
Proposed	2,157.49%	13.72%	14.04%	-7.81%	38.17%

### Hypothetical Performance (5/11/87 – 7/31/11)



### Return & Standard Deviation (5/11/87 – 7/31/11)



#### Confidence Intervals & Probability

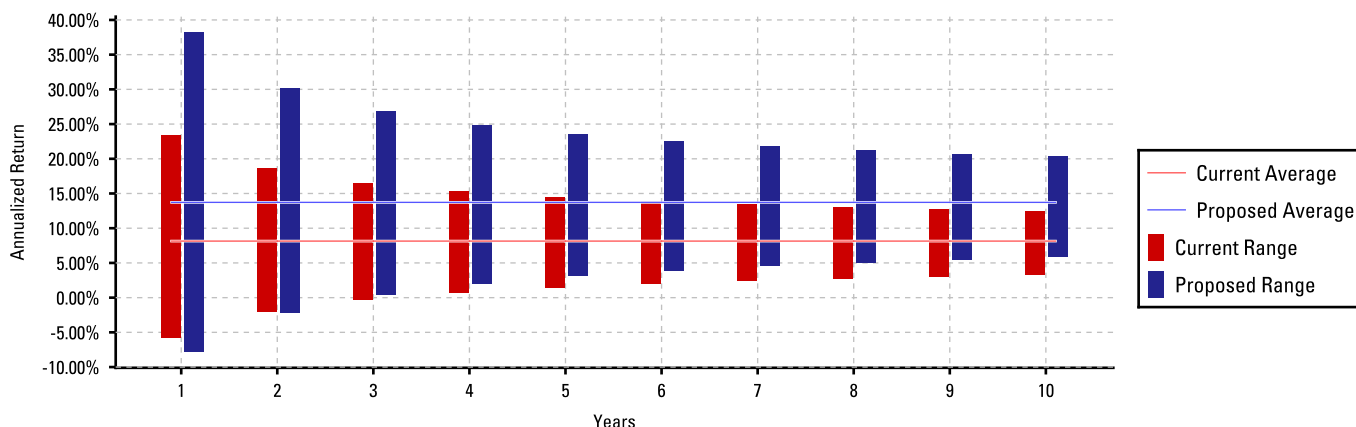
A term used in inferential statistics that measures the probability that a population parameter will fall between two set values. The confidence interval can take any number of probabilities, with the most common being 90%, 95% or 99%. In other words, a confidence interval is the probability that a value will fall between an upper and lower bound of a probability distribution.

**IMPORTANT: The projections or other information regarding the likelihood of various investment outcomes are hypothetical in nature, do not reflect actual investment results and are not guarantees of future results. Results may vary over time.**

The Performance Data quoted represents past performance and does not guarantee future results. The investment return and principal value of an investment will fluctuate; thus an investor's shares, when redeemed, may be worth more or less than their original cost. Current performance may be higher or lower than return data quoted herein.

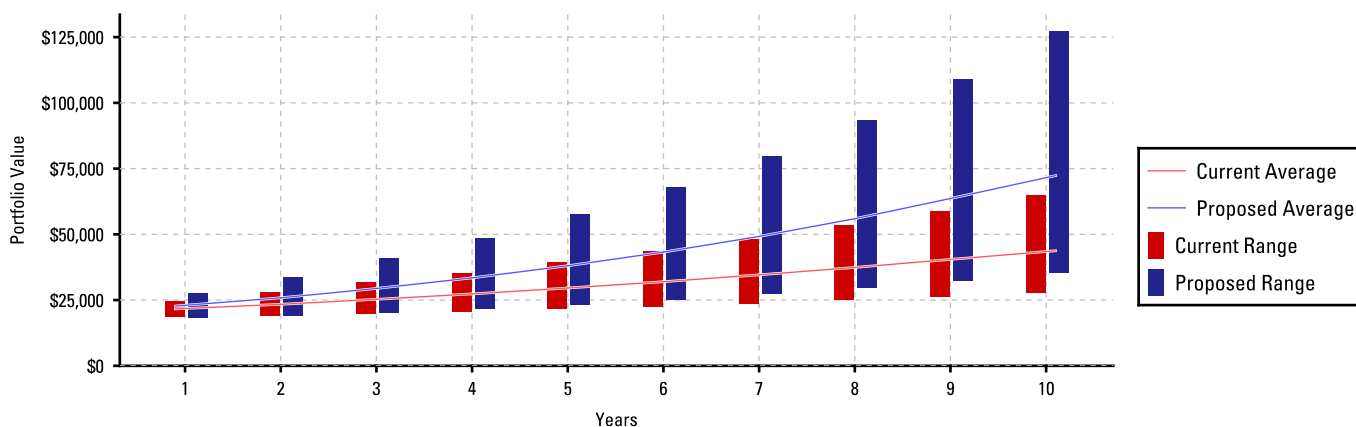
©AdvisoryWorld, Inc. All Rights Reserved. The Information and analysis contained herein (1) Include the confidential and proprietary information of AdvisoryWorld, Inc. and Lipper, (2) may not be copied or redistributed, (3) do not constitute investment advice offered by AdvisoryWorld, Inc and Lipper, (4) are provided solely for informational purposes and therefore are not an offer to buy or sell a security, (5) are not warranted to be correct, complete or accurate and (6) no part of AdvisoryWorld, Inc. and Lipper compensation was, is, or will be, directly or indirectly, related to the specific recommendations or views expressed in this research report. AdvisoryWorld, Inc. and Lipper shall not be held responsible for any trading decisions, damages or other losses resulting from, or related to, this information, data or analysis and their use. This report is supplemental sales literature.

### Theoretical Range of Returns with 90% Probability



	Assumptions		Theoretical Range of Returns							
	Annual. Return	Standard Deviation	1 Year		Annualized 3 Year		Annualized 5 Year		Annualized 10 Year	
			Min.	Max.	Min.	Max.	Min.	Max.	Min.	Max.
Current	8.14%	8.90%	-5.84%	23.37%	-0.31%	16.52%	1.46%	14.49%	3.27%	12.48%
Proposed	13.72%	14.04%	-7.81%	38.17%	0.42%	26.85%	3.10%	23.55%	5.87%	20.32%

### Theoretical Range of Values with 90% Probability



	Assumptions		Theoretical Range of Values											
	Annual. Return	Standard Deviation	1 Year Ending Value			3 Year Ending Value			5 Year Ending Value			10 Year Ending Value		
			Avg.	Min.	Max.	Avg.	Min.	Max.	Avg.	Min.	Max.	Avg.	Min.	Max.
Current	8.14%	8.90%	\$21,629	\$18,832	\$24,674	\$25,295	\$19,816	\$31,643	\$29,584	\$21,504	\$39,349	\$43,759	\$27,597	\$64,859
Proposed	13.72%	14.04%	\$22,744	\$18,438	\$27,634	\$29,414	\$20,254	\$40,821	\$38,039	\$23,299	\$57,581	\$72,349	\$35,377	\$127,184

#### Confidence Intervals & Probability

A term used in inferential statistics that measures the probability that a population parameter will fall between two set values. The confidence interval can take any number of probabilities, with the most common being 90%, 95% or 99%. In other words, a confidence interval is the probability that a value will fall between an upper and lower bound of a probability distribution.

**IMPORTANT: The projections or other information regarding the likelihood of various investment outcomes are hypothetical in nature, do not reflect actual investment results and are not guarantees of future results. Results may vary over time.**

The Performance Data quoted represents past performance and does not guarantee future results. The investment return and principal value of an investment will fluctuate; thus an investor's shares, when redeemed, may be worth more or less than their original cost. Current performance may be higher or lower than return data quoted herein.

©AdvisoryWorld, Inc. All Rights Reserved. The Information and analysis contained herein (1) Include the confidential and proprietary information of AdvisoryWorld, Inc. and Lipper, (2) may not be copied or redistributed, (3) do not constitute investment advice offered by AdvisoryWorld, Inc and Lipper, (4) are provided solely for informational purposes and therefore are not an offer to buy or sell a security, (5) are not warranted to be correct, complete or accurate and (6) no part of AdvisoryWorld, Inc. and Lipper compensation was, is, or will be, directly or indirectly, related to the specific recommendations or views expressed in this research report. AdvisoryWorld, Inc. and Lipper shall not be held responsible for any trading decisions, damages or other losses resulting from, or related to, this information, data or analysis and their use. This report is supplemental sales literature.

# Detailed Analytics

Data as of 9/3/2010

## Performance

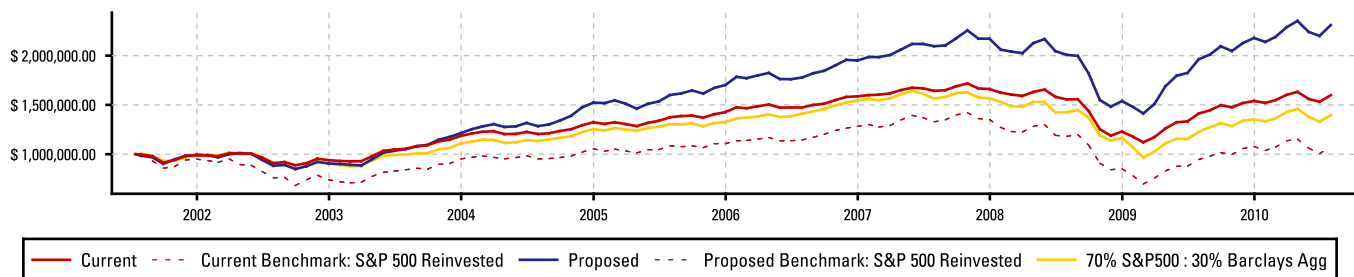
Fee-Adjusted Returns as of 7/31/2010

Name	Weighting	Returns					Standard Deviation				Sharpe Ratio			
		Trailing 1 Year	Trailing 3 Years	Trailing 5 Years	Trailing 7 Years	Trailing 10 Years	Trailing 3 Years	Trailing 5 Years	Trailing 7 Years	Trailing 10 Years	Trailing 3 Years	Trailing 5 Years	Trailing 7 Years	Trailing 10 Years
S&P 500 Reinvested	100.00%	13.84%	-6.77%	-0.17%	3.58%	-	20.83%	16.88%	15.01%	-	-0.42	-0.20	0.05	-
<b>Traditional Allocation (Current)</b>	<b>100.00%</b>	<b>13.24%</b>	<b>-0.90%</b>	<b>3.07%</b>	<b>6.13%</b>	<b>-</b>	<b>14.01%</b>	<b>11.31%</b>	<b>10.12%</b>	<b>-</b>	<b>-0.20</b>	<b>-0.01</b>	<b>0.33</b>	<b>-</b>
Lipper A Rated Bond Fund	50.00%	12.03%	6.47%	5.03%	5.07%	5.89%	5.66%	4.79%	4.48%	4.40%	0.80	0.38	0.50	0.68
<b>American Funds Bond;A</b>	<b>50.00%</b>	<b>11.56%</b>	<b>3.18%</b>	<b>3.51%</b>	<b>4.37%</b>	<b>5.31%</b>	<b>6.64%</b>	<b>5.35%</b>	<b>4.93%</b>	<b>4.88%</b>	<b>0.18</b>	<b>0.06</b>	<b>0.31</b>	<b>0.50</b>
Lipper Large-Cap Growth	25.00%	11.80%	-5.04%	-0.23%	2.83%	-4.58%	22.19%	17.94%	16.15%	18.57%	-0.32	-0.19	-0.00	-0.40
<b>American Funds Gro;A</b>	<b>25.00%</b>	<b>10.14%</b>	<b>-6.17%</b>	<b>1.07%</b>	<b>5.28%</b>	<b>0.67%</b>	<b>20.60%</b>	<b>16.87%</b>	<b>15.23%</b>	<b>17.33%</b>	<b>-0.40</b>	<b>-0.13</b>	<b>0.16</b>	<b>-0.13</b>
Lipper Small-Cap Value	15.00%	21.11%	-3.96%	1.12%	7.47%	8.68%	25.92%	21.19%	19.28%	19.00%	-0.23	-0.10	0.24	0.31
<b>DFA US Small Cap Val;I</b>	<b>15.00%</b>	<b>22.47%</b>	<b>-6.72%</b>	<b>-0.37%</b>	<b>7.51%</b>	<b>9.23%</b>	<b>29.97%</b>	<b>24.50%</b>	<b>22.55%</b>	<b>22.54%</b>	<b>-0.29</b>	<b>-0.15</b>	<b>0.21</b>	<b>0.28</b>
Lipper Intl Large-Cap Growth	10.00%	9.30%	-7.97%	3.33%	7.23%	-0.89%	24.75%	20.41%	18.13%	18.55%	-0.40	0.01	0.24	-0.20
<b>American Funds EuPc;A</b>	<b>10.00%</b>	<b>8.71%</b>	<b>-4.96%</b>	<b>6.05%</b>	<b>10.75%</b>	<b>4.19%</b>	<b>24.20%</b>	<b>19.97%</b>	<b>17.69%</b>	<b>17.36%</b>	<b>-0.29</b>	<b>0.14</b>	<b>0.45</b>	<b>0.08</b>

Name	Weighting	Returns					Standard Deviation				Sharpe Ratio			
		Trailing 1 Year	Trailing 3 Years	Trailing 5 Years	Trailing 7 Years	Trailing 10 Years	Trailing 3 Years	Trailing 5 Years	Trailing 7 Years	Trailing 10 Years	Trailing 3 Years	Trailing 5 Years	Trailing 7 Years	Trailing 10 Years
S&P 500 Reinvested	100.00%	13.84%	-6.77%	-0.17%	3.58%	-	20.83%	16.88%	15.01%	-	-0.42	-0.20	0.05	-
<b>Alternative Allocation (Proposed)</b>	<b>100.00%</b>	<b>17.75%</b>	<b>3.31%</b>	<b>7.62%</b>	<b>11.91%</b>	<b>-</b>	<b>17.48%</b>	<b>14.17%</b>	<b>12.86%</b>	<b>-</b>	<b>0.08</b>	<b>0.31</b>	<b>0.71</b>	<b>-</b>
Barclay US Agg TR	15.00%	8.91%	7.63%	5.96%	5.63%	6.48%	4.07%	3.63%	3.65%	3.79%	1.39	0.76	0.76	0.95
<b>PIMCO:Tot Rtn;Inst</b>	<b>15.00%</b>	<b>12.52%</b>	<b>11.25%</b>	<b>7.94%</b>	<b>7.36%</b>	<b>7.90%</b>	<b>4.65%</b>	<b>4.23%</b>	<b>4.04%</b>	<b>4.20%</b>	<b>1.99</b>	<b>1.12</b>	<b>1.12</b>	<b>1.20</b>
Lipper Flex Portfolio Fund	15.00%	12.52%	-1.71%	3.20%	5.67%	2.42%	17.19%	13.75%	12.19%	12.30%	-0.21	-0.00	0.23	-0.04
<b>Bruce Fund</b>	<b>15.00%</b>	<b>16.63%</b>	<b>-0.35%</b>	<b>3.44%</b>	<b>14.27%</b>	<b>17.59%</b>	<b>17.11%</b>	<b>14.14%</b>	<b>14.85%</b>	<b>15.22%</b>	<b>-0.14</b>	<b>0.02</b>	<b>0.77</b>	<b>0.97</b>
Lipper A Rated Bond Fund	15.00%	12.03%	6.47%	5.03%	5.07%	5.89%	5.66%	4.79%	4.48%	4.40%	0.80	0.38	0.50	0.68
<b>American Funds Bond;A</b>	<b>15.00%</b>	<b>11.56%</b>	<b>3.18%</b>	<b>3.51%</b>	<b>4.37%</b>	<b>5.31%</b>	<b>6.64%</b>	<b>5.35%</b>	<b>4.93%</b>	<b>4.88%</b>	<b>0.18</b>	<b>0.06</b>	<b>0.31</b>	<b>0.50</b>
Lipper Intl Large-Cap Growth	15.00%	9.30%	-7.97%	3.33%	7.23%	-0.89%	24.75%	20.41%	18.13%	18.55%	-0.40	0.01	0.24	-0.20
<b>American Funds EuPc;A</b>	<b>15.00%</b>	<b>8.71%</b>	<b>-4.96%</b>	<b>6.05%</b>	<b>10.75%</b>	<b>4.19%</b>	<b>24.20%</b>	<b>19.97%</b>	<b>17.69%</b>	<b>17.36%</b>	<b>-0.29</b>	<b>0.14</b>	<b>0.45</b>	<b>0.08</b>
Russell 1000 Value TR	5.00%	15.39%	-8.96%	-0.91%	4.25%	2.92%	22.28%	18.13%	16.08%	16.05%	-0.49	-0.23	0.09	0.00
<b>Intl Bus. Machines</b>	<b>2.50%</b>	<b>10.89%</b>	<b>6.99%</b>	<b>10.23%</b>	<b>7.86%</b>	<b>2.20%</b>	<b>21.91%</b>	<b>19.82%</b>	<b>19.56%</b>	<b>29.04%</b>	<b>0.23</b>	<b>0.35</b>	<b>0.26</b>	<b>-0.02</b>
<b>Ford Motor</b>	<b>2.50%</b>	<b>59.63%</b>	<b>14.49%</b>	<b>4.66%</b>	<b>3.79%</b>	<b>-9.95%</b>	<b>97.20%</b>	<b>78.01%</b>	<b>68.16%</b>	<b>64.50%</b>	<b>0.13</b>	<b>0.02</b>	<b>0.01</b>	<b>-0.20</b>
Lipper Mid-Cap Core	5.00%	20.69%	-4.07%	1.87%	6.63%	3.66%	23.51%	19.07%	17.22%	18.47%	-0.26	-0.07	0.22	0.04
<b>iShares:Russ MC Idx</b>	<b>5.00%</b>	<b>23.15%</b>	<b>-4.91%</b>	<b>1.44%</b>	<b>7.47%</b>	<b>-</b>	<b>25.24%</b>	<b>20.40%</b>	<b>18.28%</b>	<b>-</b>	<b>-0.27</b>	<b>-0.09</b>	<b>0.25</b>	<b>-</b>
Lipper Mid-Cap Growth	5.00%	19.65%	-4.01%	3.06%	6.59%	-1.15%	24.66%	20.31%	18.56%	21.65%	-0.24	-0.01	0.20	-0.19
<b>iShares:Russ MCG Idx</b>	<b>5.00%</b>	<b>20.12%</b>	<b>-5.01%</b>	<b>1.14%</b>	<b>6.12%</b>	<b>-</b>	<b>25.08%</b>	<b>20.49%</b>	<b>18.63%</b>	<b>-</b>	<b>-0.28</b>	<b>-0.10</b>	<b>0.18</b>	<b>-</b>
Russell 1000 Gro TR	5.00%	13.65%	-4.25%	0.80%	3.55%	-4.08%	20.99%	17.01%	15.27%	18.88%	-0.30	-0.14	0.05	-0.37
<b>Apple Inc</b>	<b>5.00%</b>	<b>57.45%</b>	<b>24.98%</b>	<b>43.25%</b>	<b>57.84%</b>	<b>26.05%</b>	<b>43.20%</b>	<b>39.45%</b>	<b>40.19%</b>	<b>48.86%</b>	<b>0.53</b>	<b>1.02</b>	<b>1.37</b>	<b>0.47</b>
Lipper Large-Cap Growth	5.00%	11.80%	-5.04%	-0.23%	2.83%	-4.58%	22.19%	17.94%	16.15%	18.57%	-0.32	-0.19	-0.00	-0.40
<b>American Funds Gro;A</b>	<b>5.00%</b>	<b>10.14%</b>	<b>-6.17%</b>	<b>1.07%</b>	<b>5.28%</b>	<b>0.67%</b>	<b>20.60%</b>	<b>16.87%</b>	<b>15.23%</b>	<b>17.33%</b>	<b>-0.40</b>	<b>-0.13</b>	<b>0.16</b>	<b>-0.13</b>

©AdvisoryWorld, Inc. All Rights Reserved. The Information and analysis contained herein (1) include the confidential and proprietary information of AdvisoryWorld, Inc. and Lipper, (2) may not be copied or redistributed, (3) do not constitute investment advice offered by AdvisoryWorld, Inc. and Lipper, (4) are provided solely for informational purposes and therefore are not an offer to buy or sell a security, (5) are not warranted to be correct, complete or accurate and (6) no part of AdvisoryWorld, Inc. and Lipper compensation was, is, or will be, directly or indirectly, related to the specific recommendations or views expressed in this research report. AdvisoryWorld, Inc. and Lipper shall not be held responsible for any trading decisions, damages or other losses resulting from, or related to, this information, data or analysis and their use. This report is supplemental sales literature.

### Trailing Performance 7/17/2001-7/31/2010



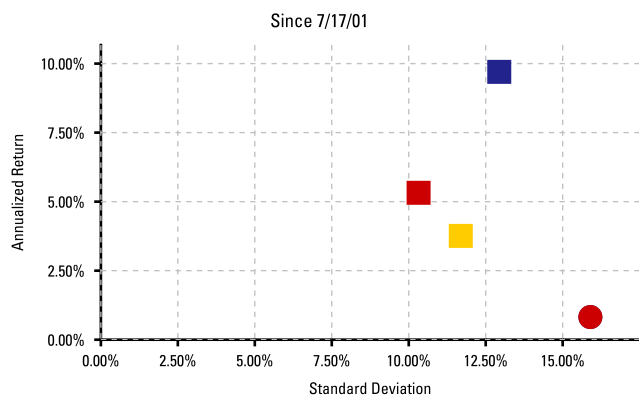
	1 Month	3 Months	YTD	1 Year	3 Years	5 Years	7 Years	Since 7/17/01	Performance Disclosure
<b>Traditional Allocation (Current)</b>									
Cumulative Return	4.37%	-2.05%	3.81%	13.24%	-2.68%	16.35%	51.68%	59.88%	<i>The Performance Data quoted represents past performance and does not guarantee future results. The investment return and principal value of an investment will fluctuate; thus an investor's shares, when redeemed, may be worth more or less than their original cost. Current performance may be higher or lower than return data quoted herein.</i> <b>See Open End Mutual Fund Holding Returns – Standardized Returns</b>
Benchmark	7.00%	-6.68%	-0.10%	13.84%	-18.97%	-0.85%	27.96%	7.65%	
Annualized Return	-	-	-	-	-0.90%	3.07%	6.13%	5.32%	
Benchmark	-	-	-	-	-6.77%	-0.17%	3.58%	0.82%	
Risk Adjusted	-	-3.70%	0.03%	7.67%	-10.20%	5.60%	25.70%	14.94%	
Benchmark	-	-	-	-	-	-	-	-	
<b>Alternative Allocation (Proposed)</b>									
Cumulative Return	5.01%	-1.78%	6.02%	17.75%	10.26%	44.40%	119.87%	131.02%	
Benchmark	7.00%	-6.68%	-0.10%	13.84%	-18.97%	-0.85%	27.96%	7.65%	
Annualized Return	-	-	-	-	3.31%	7.62%	11.91%	9.70%	
Benchmark	-	-	-	-	-6.77%	-0.17%	3.58%	0.82%	
Risk Adjusted	-	-4.12%	0.01%	9.07%	-14.01%	2.85%	26.70%	12.36%	
Benchmark	-	-	-	-	-	-	-	-	
<b>70% S&amp;P500 : 30% Barclays Agg</b>									
Cumulative Return	5.04%	-4.42%	3.21%	13.89%	-10.62%	7.11%	40.46%	39.65%	
Annualized Return	-	-	-	-	-3.67%	1.38%	4.97%	3.76%	

### Calendar Year Performance

	2010	2009	2008	2007	2006	2005	2004	2003	2002	2001
<b>Current</b>	3.81%	25.22%	-25.95%	4.65%	11.23%	7.77%	11.71%	26.16%	-5.34%	-0.75%
S&P 500 Reinvested	-0.10%	26.47%	-36.99%	5.49%	15.78%	4.91%	10.87%	28.67%	-22.09%	-5.04%
<b>Proposed</b>	6.02%	41.58%	-29.11%	11.29%	14.62%	11.75%	25.54%	33.88%	-8.63%	-0.83%
S&P 500 Reinvested	-0.10%	26.47%	-36.99%	5.49%	15.78%	4.91%	10.87%	28.67%	-22.09%	-5.04%
<b>70% S&amp;P500 : 30% Barclays Agg</b>	3.21%	15.96%	-25.53%	1.41%	16.67%	5.52%	13.06%	22.55%	-7.98%	-1.58%

©AdvisoryWorld, Inc. All Rights Reserved. The Information and analysis contained herein (1) Include the confidential and proprietary information of AdvisoryWorld, Inc. and Lipper, (2) may not be copied or redistributed, (3) do not constitute investment advice offered by AdvisoryWorld, Inc and Lipper, (4) are provided solely for informational purposes and therefore are not an offer to buy or sell a security, (5) are not warranted to be correct, complete or accurate and (6) no part of AdvisoryWorld, Inc. and Lipper compensation was, is, or will be, directly or indirectly, related to the specific recommendations or views expressed in this research report. AdvisoryWorld, Inc. and Lipper shall not be held responsible for any trading decisions, damages or other losses resulting from, or related to, this information, data or analysis and their use. This report is supplemental sales literature.

## Risk Analysis



1 Year    3 Years    5 Years    Since 7/17/2001

### Traditional Allocation (Current)

Sharpe Ratio	1.46	-0.20	-0.01	0.26
Alpha	0.06	0.08	0.11	0.45
Beta	0.54	0.65	0.64	0.61
R <sup>2</sup>	0.95	0.93	0.91	0.87
Sterling Ratio	1.36	0.05	-0.13	-0.21
Treynor Ratio	0.24	-0.04	-0.00	0.04
Maximum Drawdown	-6.23%	-40.80%	-40.80%	-40.80%
Tracking Error	15.18%	19.61%	15.43%	9.51%
Up Market Capture	63.02%	69.80%	68.90%	71.91%
Down Market Capture	49.30%	63.69%	59.75%	54.52%

### Alternative Allocation (Proposed)

Sharpe Ratio	1.63	0.08	0.31	0.55
Alpha	0.09	0.24	0.42	1.19
Beta	0.65	0.80	0.79	0.75
R <sup>2</sup>	0.93	0.91	0.89	0.84
Sterling Ratio	1.89	-0.14	-0.28	-0.34
Treynor Ratio	0.27	0.02	0.06	0.10
Maximum Drawdown	-6.56%	-44.26%	-44.26%	-44.26%
Tracking Error	14.82%	16.60%	10.90%	5.97%
Up Market Capture	82.37%	99.39%	99.52%	101.28%
Down Market Capture	58.90%	71.91%	68.24%	63.00%

### 70% S&P500 : 30% Barclays Agg

Sharpe Ratio	1.16	-0.35	-0.14	0.10
Maximum Drawdown	-9.21%	-49.55%	-50.51%	-50.51%

1 Year    3 Years    5 Years    Since 7/17/2001

### Traditional Allocation (Current)

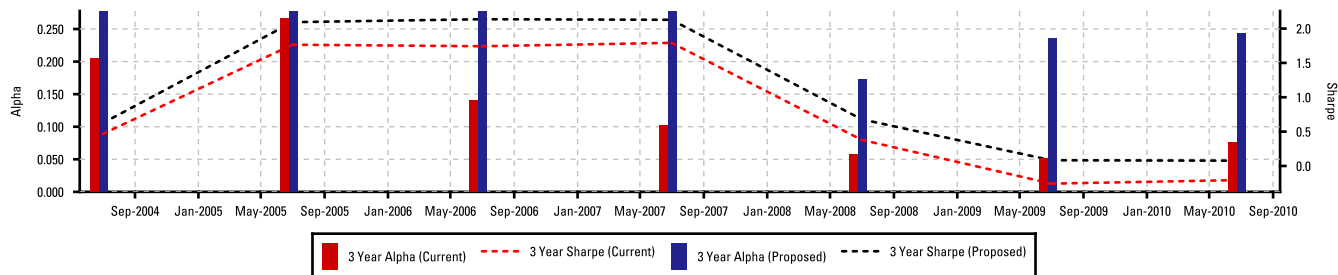
Annualized Return	13.24%	-0.90%	3.07%	5.32%
Standard Deviation	8.89%	14.01%	11.31%	10.32%
Benchmark Return	13.84%	-6.77%	-0.17%	0.82%
Benchmark StDev	15.95%	20.83%	16.88%	15.90%

### Alternative Allocation (Proposed)

Annualized Return	17.75%	3.31%	7.62%	9.70%
Standard Deviation	10.69%	17.48%	14.17%	12.94%
Benchmark Return	13.84%	-6.77%	-0.17%	0.82%
Benchmark StDev	15.95%	20.83%	16.88%	15.90%

### 70% S&P500 : 30% Barclays Agg

Annualized Return	13.89%	-3.67%	1.38%	3.76%
Standard Deviation	11.73%	16.24%	13.17%	11.69%



### Current

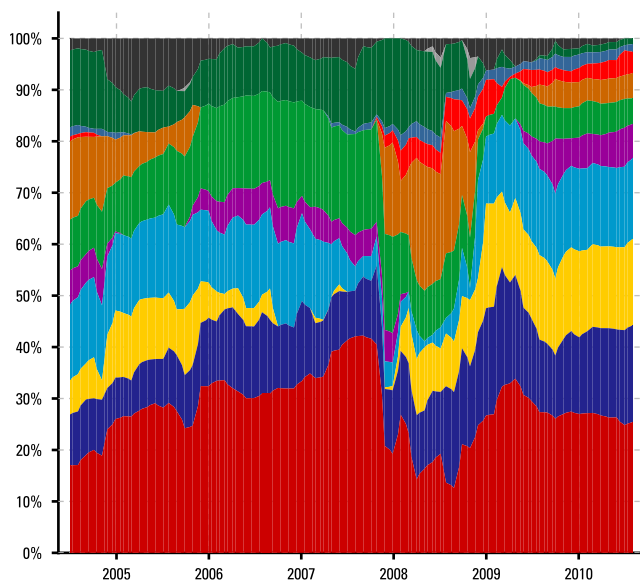
	3 Months	1 Year	3 Years
Best Period	3/1/09-5/31/09	3/1/09-2/28/10	4/1/03-3/31/06
Cumulative Return	18.08%	38.10%	60.06%
Benchmark	25.80%	53.55%	61.03%
Worst Period	9/1/08-11/30/08	3/1/08-2/28/09	3/1/06-2/28/09
Cumulative Return	-23.67%	-30.17%	-23.53%
Benchmark	-29.64%	-43.29%	-38.79%

### Proposed

	3 Months	1 Year	3 Years
Best Period	3/1/09-5/31/09	3/1/09-2/28/10	4/1/03-3/31/06
Cumulative Return	27.12%	54.91%	103.13%
Benchmark	25.80%	53.55%	61.03%
Worst Period	9/1/08-11/30/08	12/1/07-11/30/08	3/1/06-2/28/09
Cumulative Return	-25.75%	-31.76%	-20.22%
Benchmark	-29.64%	-38.08%	-38.79%

©AdvisoryWorld, Inc. All Rights Reserved. The Information and analysis contained herein (1) Include the confidential and proprietary information of AdvisoryWorld, Inc. and Lipper, (2) may not be copied or redistributed, (3) do not constitute investment advice offered by AdvisoryWorld, Inc. and Lipper, (4) are provided solely for informational purposes and therefore are not an offer to buy or sell a security, (5) are not warranted to be correct, complete or accurate and (6) no part of AdvisoryWorld, Inc. and Lipper compensation was, is, or will be, directly or indirectly, related to the specific recommendations or views expressed in this research report. AdvisoryWorld, Inc. and Lipper shall not be held responsible for any trading decisions, damages or other losses resulting from, or related to, this information, data or analysis and their use. This report is supplemental sales literature.

Style Analysis

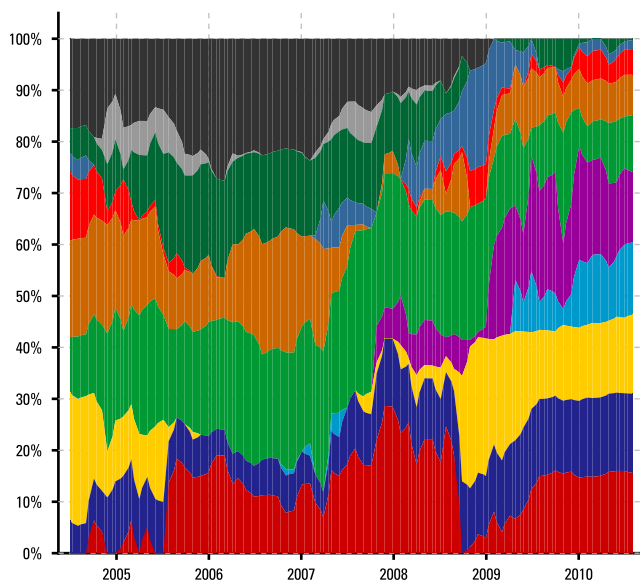


Traditional Allocation

Period Ending 7/31/10

Benchmark Index	Avg.	Ending	Min.	Max.	St. Dev.
Barclay US Gvt TR	27.83 %	25.41 %	12.61 %	42.23 %	6.76 %
Russell Mid Cp Gro TR	13.51 %	18.81 %	7.00 %	23.23 %	3.58 %
Russell 1000 Value TR	8.93 %	16.80 %	0.00 %	20.34 %	6.06 %
Barclay US Corp HY TR	12.82 %	15.64 %	1.14 %	19.02 %	4.81 %
Russell 1000 Gro TR	3.67 %	6.70 %	0.00 %	10.79 %	2.93 %
MSCI EAFE GD	12.39 %	5.01 %	3.39 %	20.68 %	5.15 %
Barclay Corp Inv Gr TR	5.95 %	4.83 %	0.00 %	25.72 %	7.19 %
Barclay GI Agg X-US TR	1.75 %	4.23 %	0.00 %	7.14 %	2.18 %
MSCI Emerging Mkt GD	1.17 %	1.44 %	0.00 %	3.90 %	1.07 %
Russell 2000 Value TR	8.33 %	1.13 %	0.00 %	18.82 %	5.26 %
Russell Mid Cp Val TR	0.11 %	0.00 %	0.00 %	4.06 %	0.54 %
Russell 2000 Gro TR	3.54 %	0.00 %	0.00 %	12.33 %	3.14 %

Mix of investment styles that best explains the fund's behavior over the last 74 months. May be representative, but not indicative of actual holdings.



Alternative Allocation

Period Ending 7/31/10

Benchmark Index	Avg.	Ending	Min.	Max.	St. Dev.
Barclay Corp Inv Gr TR	12.30 %	15.61 %	0.00 %	28.63 %	7.36 %
MSCI Emerging Mkt GD	10.60 %	15.40 %	4.86 %	15.94 %	3.46 %
Barclay US Gvt TR	8.80 %	15.37 %	0.00 %	27.56 %	8.74 %
Russell Mid Cp Val TR	2.33 %	14.00 %	0.00 %	14.25 %	4.39 %
Russell 1000 Gro TR	5.90 %	13.69 %	0.00 %	24.36 %	7.97 %
Russell Mid Cp Gro TR	20.04 %	11.03 %	5.41 %	32.34 %	6.15 %
Barclay US Corp HY TR	10.97 %	7.87 %	0.00 %	24.31 %	6.92 %
Russell 2000 Gro TR	2.39 %	5.01 %	0.00 %	13.46 %	3.26 %
Russell 1000 Value TR	3.33 %	1.74 %	0.00 %	19.66 %	4.88 %
Russell 2000 Value TR	9.61 %	0.27 %	0.00 %	21.49 %	6.47 %
Barclay GI Agg X-US TR	1.80 %	0.00 %	0.00 %	10.87 %	2.78 %
MSCI EAFE GD	11.94 %	0.00 %	0.00 %	27.60 %	8.70 %

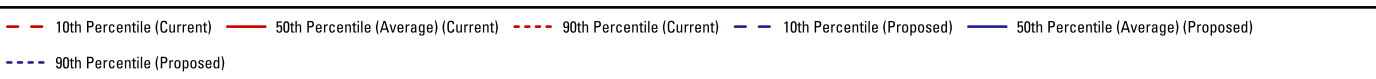
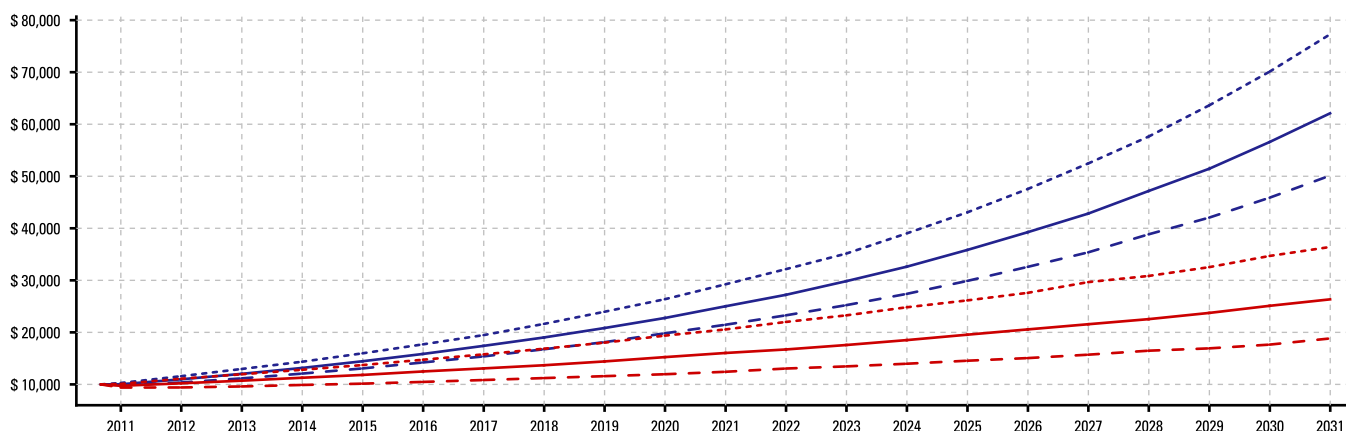
Mix of investment styles that best explains the fund's behavior over the last 74 months. May be representative, but not indicative of actual holdings.

This matrix depicts the investment style of the fund as determined by using Returns Based Style Analysis (RBSA), developed by William Sharpe, to relate the portfolio's or investment's pattern of historical returns to a series of benchmarks for classification. Style Drift measures the tendency of a portfolio or investment to deviate across styles over time.

- Average Style is the average style attribution associated with the given Benchmark Index over the 74 (Traditional Allocation) 74 (Alternative Allocation), 3-Year Rolling Observations.
- As of period ending date is the style attribution associated with the given Benchmark Index over the most recent 3-Year Rolling Observation.
- Minimum Style is the lowest style attribution associated with the given Benchmark Index over the 74 (Traditional Allocation) 74 (Alternative Allocation), 3-Year Rolling Observations.
- Maximum Style is the highest style attribution associated with the given Benchmark Index over the 74 (Traditional Allocation) 74 (Alternative Allocation), 3-Year Rolling Observations.
- Standard Deviation, relating to Style Drift in this context, is a statistical measure of the volatility of the style attribution associated with the given Benchmark Index over the 74 (Traditional Allocation) 74 (Alternative Allocation), 3-Year Rolling Observations.

©AdvisoryWorld, Inc. All Rights Reserved. The Information and analysis contained herein (1) Include the confidential and proprietary information of AdvisoryWorld, Inc. and Lipper, (2) may not be copied or redistributed, (3) do not constitute investment advice offered by AdvisoryWorld, Inc and Lipper, (4) are provided solely for informational purposes and therefore are not an offer to buy or sell a security, (5) are not warranted to be correct, complete or accurate and (6) no part of AdvisoryWorld, Inc. and Lipper compensation was, is, or will be, directly or indirectly, related to the specific recommendations or views expressed in this research report. AdvisoryWorld, Inc. and Lipper shall not be held responsible for any trading decisions, damages or other losses resulting from, or related to, this information, data or analysis and their use. This report is supplemental sales literature.

### Monte Carlo Simulation



Assumptions	Results (Beginning Value = \$10,000.00)					
-------------	---	--	--	--	--	--

	Avg. Return	Stand. Dev.	Current	Ending Value	Ending Date	Proposed	Ending Value	Ending Date
<b>Current</b>	5.32%	10.32%	10th Percentile	\$18,833.38	12/31/2030	10th Percentile	\$50,131.29	12/31/2030
<b>Proposed</b>	9.70%	12.94%	50th Percentile	\$26,345.51	12/31/2030	50th Percentile	\$62,102.99	12/31/2030
			90th Percentile	\$36,409.68	12/31/2030	90th Percentile	\$77,278.97	12/31/2030

The purpose of this analysis is to provide investors with the probable 50<sup>th</sup> (Average), 10<sup>th</sup> (Lower 10 Percent) and 90<sup>th</sup> (Upper 10 Percent) percentile values that a selected portfolio will observe under hypothetical market scenarios over a period of time. 80% of simulation trials occur between the 90<sup>th</sup> and the 10<sup>th</sup> percentile range. 10% of simulated outcomes fall below the 10<sup>th</sup> percentile line and should be examined in order to help investors recognize their level of risk tolerance. This analytical technique in which a large number of simulations are run using random quantities for portfolio rate of return looks at the distribution of results to infer which values are most likely. This illustrations Probability of various outcomes is obtained by generating 5,000 random values within the upper and lower boundaries of returns.

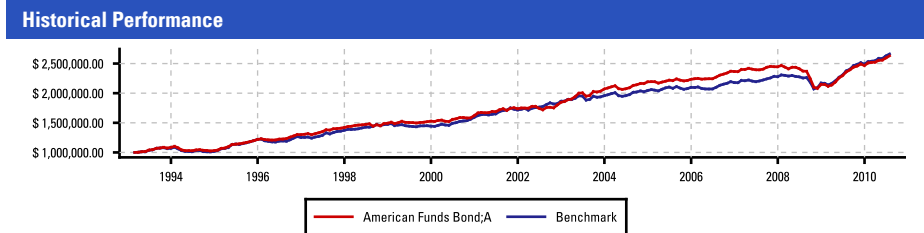
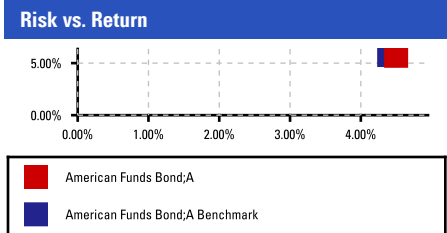
The Monte Carlo calculations are based on the portfolio rate of return, the portfolio standard deviation (volatility), the time period analyzed, and cash flows (contributions and withdrawals) made during the time period. Standard deviation is a statistical measure of the historical volatility of a portfolio or one or more of its assets. More generally, it is a measure of the extent to which numbers are spread around their average. The assumed returns are adjusted based upon the historical standard deviations of return for asset classes and/or securities which measure the volatility or deviation of annual returns of an asset class or security from its average. Changing any of these variables will impact the probability of achieving outcomes.

**IMPORTANT: The projections or other information generated by AdvisoryWorld’s Monte Carlo simulation application regarding the likelihood of various investment outcomes are hypothetical in nature, do not reflect actual investment results and are not guarantees of future results. This Monte Carlo simulation is for illustrative purposes to educate parties about the effects of volatility and uncertainty over time. Results may vary with each use and over time. Do not rely upon the results of this report to predict actual future performance of any investment or investment strategy.**

©AdvisoryWorld, Inc. All Rights Reserved. The Information and analysis contained herein (1) Include the confidential and proprietary information of AdvisoryWorld, Inc. and Lipper, (2) may not be copied or redistributed, (3) do not constitute investment advice offered by AdvisoryWorld, Inc and Lipper, (4) are provided solely for informational purposes and therefore are not an offer to buy or sell a security, (5) are not warranted to be correct, complete or accurate and (6) no part of AdvisoryWorld, Inc. and Lipper compensation was, is, or will be, directly or indirectly, related to the specific recommendations or views expressed in this research report. AdvisoryWorld, Inc. and Lipper shall not be held responsible for any trading decisions, damages or other losses resulting from, or related to, this information, data or analysis and their use. This report is supplemental sales literature.

# Bond Fund of America, Inc; Class A Shares – MF

Inception	5/28/1974	Asset Class	Lipper A Rated Bond Fund	NAV 9/2/2010	\$12.39	Max Front End Load	3.75%	Management Fee	0.23%
Family	American Funds	Manager	Team Managed	52 Week High	\$12.44	Max Rdmpt/CDSC Fee	0.00%	12b-1 Fee	0.25%
Benchmark	Asset Class Benchmark	Tenure	N/A	52 Week Low	\$11.60	Min Initial Purchase	\$250	Expense Ratio	0.65%
				AUM	-	Min IRA Purchase	\$250	Turnover Ratio	84.00%



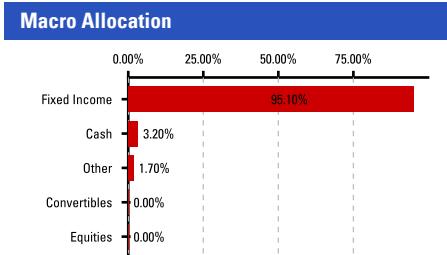
	1 Year	3 Years	5 Years	Since 3/2/1993
Standard Deviation	2.74%	6.64%	5.35%	4.50%
Benchmark StDev	3.00%	5.66%	4.79%	4.40%
Sharpe Ratio	4.12	0.18	0.06	0.39
Alpha	0.01	-0.13	-0.10	0.05
Beta	0.87	1.11	1.05	0.88
R <sup>2</sup>	0.90	0.90	0.88	0.74
Max. Drawdown	-0.99%	-16.65%	-16.65%	-16.65%
Tracking Error	3.08%	6.70%	5.57%	4.76%
Up Market Capture	96.83%	86.50%	86.97%	88.86%
Down Market Capture	105.82	135.78	108.37	74.88%

	See Open End Mutual Fund Holding Returns – Standardized Returns									
	1 Month	YTD 3 Months	1 Year	3 Yrs. Cml.	3 Yrs. Ann.	5 Yrs. Cml.	5 Yrs. Ann.	Incept. Cml.	Incept. Ann.	
American Funds Bond;A	1.39%	6.65%	3.05%	11.56%	9.85%	3.18%	18.85%	3.51%	163.02%	5.71%
Benchmark	1.29%	6.90%	2.97%	12.03%	20.70%	6.47%	27.84%	5.03%	166.27%	5.78%

	Calendar Year Performance									
	2010	2009	2008	2007	2006	2005	2004	2003	2002	2001
American Funds Bond;A	6.65%	14.91%	-12.24%	3.37%	5.88%	1.96%	5.85%	12.22%	6.11%	7.15%
Benchmark	6.90%	14.73%	-4.70%	4.55%	3.90%	2.53%	4.51%	5.02%	8.57%	7.79%

**Performance Disclosure**  
The Performance Data quoted represents past performance and does not guarantee future results. The investment return and principal value of an investment will fluctuate; thus an investor's shares, when redeemed, may be worth more or less than their original cost. Current performance may be higher or lower than return data quoted herein.  
**Call American Funds for performance data current to the most recent month end.**

	Best Period	Cmltv. Return	Bmark	Worst Period	Cmltv. Return	Bmark	Up Periods	Bmark	Down Periods	Bmark
3 Months	End-7/31/09	7.78%	7.63%	End-11/30/08	-12.16%	-7.50%	161	154	46	53
1 Year	End-11/30/09	19.70%	20.09%	End-11/30/08	-14.94%	-8.32%	175	170	23	28
3 Years	End-1/31/98	37.96%	34.20%	End-11/30/08	-6.04%	0.80%	167	174	7	0



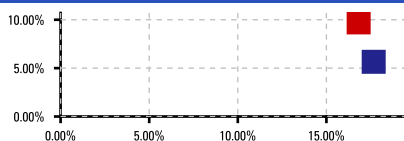
Fixed Income Properties			
Avg. Yrs. Maturity	6.2 yrs	Avg. Duration	4.4 yrs
AAA	44.68%	Avg. Coupon	5.08%
AA	4.34%	BB	2.09%
A	9.89%	B and Less	3.94%
BBB	12.86%	Not Rated	0.00%

©AdvisoryWorld, Inc. All Rights Reserved. The Information and analysis contained herein (1) Include the confidential and proprietary information of AdvisoryWorld, Inc. and Lipper, (2) may not be copied or redistributed, (3) do not constitute investment advice offered by AdvisoryWorld, Inc and Lipper, (4) are provided solely for informational purposes and therefore are not an offer to buy or sell a security, (5) are not warranted to be correct, complete or accurate and (6) no part of AdvisoryWorld, Inc. and Lipper compensation was, is, or will be, directly or indirectly, related to the specific recommendations or views expressed in this research report. AdvisoryWorld, Inc. and Lipper shall not be held responsible for any trading decisions, damages or other losses resulting from, or related to, this information, data or analysis and their use. This report is supplemental sales literature.  
 Powered by **AdvisoryWorld** FINANCIAL TECHNOLOGY

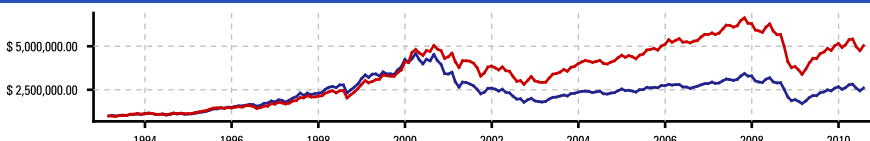
# Growth Fund of America, Inc; Class A Shares – MF

Inception	11/1/1958	Asset Class	Lipper Large-Cap Growth	NAV 9/2/2010	\$26.41	Max Front End Load	5.75%	Management Fee	0.27%
Family	American Funds	Manager	Team Managed	52 Week High	\$29.43	Max Rdmpt/CDSC Fee	0.00%	12b-1 Fee	0.24%
Benchmark	Asset Class Benchmark	Tenure	N/A	52 Week Low	\$24.70	Min Initial Purchase	\$250	Expense Ratio	0.76%
				AUM	-	Min IRA Purchase	\$250	Turnover Ratio	38.00%

## Risk vs. Return



## Historical Performance



	1 Year	3 Years	5 Years	Since 3/2/1993
Standard Deviation	15.65%	20.60%	16.87%	16.82%
Benchmark StDev	16.98%	22.19%	17.94%	17.67%
Sharpe Ratio	0.63	-0.40	-0.13	0.34
Alpha	-0.01	-0.05	0.05	2.50
Beta	0.92	0.92	0.92	0.91
R <sup>2</sup>	0.99	0.98	0.96	0.90
Max. Drawdown	-12.65%	-62.94%	-62.94%	-62.94%
Tracking Error	17.16%	23.39%	17.33%	26.92%
Up Market Capture	88.85%	86.48%	91.47%	98.64%
Down Market Capture	93.02%	94.35%	88.26%	82.44%

## Trailing Non-Standardized Returns

	1 Month	YTD 3 Months	1 Year	3 Yrs. Cml.	3 Yrs. Ann.	5 Yrs. Cml.	5 Yrs. Ann.	Incept. Cml.	Incept. Ann.
American Funds Gro:A	6.21%	-2.31%	-6.84%	10.14%	-17.39%	-6.17%	5.47%	1.07%	404.06%
Benchmark	6.78%	-2.49%	-7.45%	11.80%	-14.38%	-5.04%	-1.13%	-0.23%	160.76%

## See Open End Mutual Fund Holding Returns – Standardized Returns

	1 Month	YTD 3 Months	1 Year	3 Yrs. Cml.	3 Yrs. Ann.	5 Yrs. Cml.	5 Yrs. Ann.	Incept. Cml.	Incept. Ann.
American Funds Gro:A	6.21%	-2.31%	-6.84%	10.14%	-17.39%	-6.17%	5.47%	1.07%	404.06%
Benchmark	6.78%	-2.49%	-7.45%	11.80%	-14.38%	-5.04%	-1.13%	-0.23%	160.76%

## Calendar Year Performance

	2010	2009	2008	2007	2006	2005	2004	2003	2002	2001
American Funds Gro:A	-2.31%	34.48%	-39.07%	10.95%	10.94%	14.23%	11.95%	32.90%	-22.02%	-12.28%
Benchmark	-2.49%	38.50%	-41.39%	14.97%	4.71%	7.58%	7.45%	26.96%	-28.11%	-23.87%

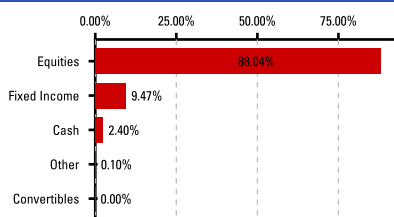
## Performance Disclosure

The Performance Data quoted represents past performance and does not guarantee future results. The investment return and principal value of an investment will fluctuate; thus an investor's shares, when redeemed, may be worth more or less than their original cost. Current performance may be higher or lower than return data quoted herein.

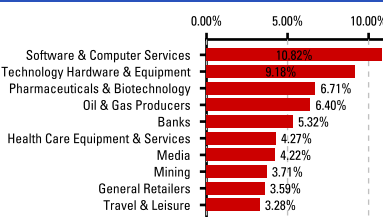
Call American Funds for performance data current to the most recent month end.

	Best Period	Cmltv. Return	Bmark	Worst Period	Cmltv. Return	Bmark	Up Periods	Bmark	Down Periods	Bmark
3 Months	End-2/29/00	27.73%	12.25%	End-11/30/08	-33.39%	-35.26%	139	133	68	74
1 Year	End-3/31/00	61.66%	35.07%	End-2/28/09	-42.31%	-41.98%	152	147	46	51
3 Years	End-3/31/00	184.98%	155.26%	End-3/31/03	-39.05%	-59.97%	129	109	45	65

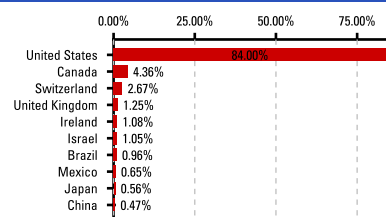
## Macro Allocation



## Top 10 Sectors



## Top 10 Countries



## Equity Properties

Sales Growth (1 yr)	-2.00%	EPS Growth (3 yr)	8.00%
Earn. Growth (1 yr.)	10.00%	Return on Equity	21.00%
Avg. Mkt. Cap.	\$60,986 mil	Return on Assets	9.00%
Price/Earnings	18.98	Return on Cap. (3yr)	13.00%
Price/Book	3.57	Oprt. C. Flow (3 yr)	12.00%

## Top 10 Equity Holdings

Microsoft Corp ORD (MSFT)	3.47%
Oracle Corp ORD (ORCL)	3.04%
Google Inc ORD (GOOG)	2.96%
Apple Inc ORD (AAPL)	2.09%
Cisco Systems Inc ORD (CSCO)	1.81%
Medtronic Inc ORD (MDT)	1.34%
JPMorg Chas ORD (JPM)	1.29%
Barrick Gold Corp ORD (ABX)	1.22%
Bank of America Corp ORD (BAC)	1.20%
Wells Fargo & Co ORD (WFC)	1.20%

©AdvisoryWorld, Inc. All Rights Reserved. The Information and analysis contained herein (1) Include the confidential and proprietary information of AdvisoryWorld, Inc. and Lipper, (2) may not be copied or redistributed, (3) do not constitute investment advice offered by AdvisoryWorld, Inc and Lipper, (4) are provided solely for informational purposes and therefore are not an offer to buy or sell a security, (5) are not warranted to be correct, complete or accurate and (6) no part of AdvisoryWorld, Inc. and Lipper compensation was, is, or will be, directly or indirectly, related to the specific recommendations or views expressed in this research report. AdvisoryWorld, Inc. and Lipper shall not be held responsible for any trading decisions, damages or other losses resulting from, or related to, this information, data or analysis and their use. This report is supplemental sales literature.